

The Honeywell logo is positioned in the top left corner. It consists of the word "Honeywell" in a bold, sans-serif font. The "H" is red, and the remaining letters "oneywell" are white. The background of the entire cover is a dark, swirling pattern of blue and orange flames or smoke, with a red circular shape in the top right corner.

**Honeywell**

Honeywell Thermal Solutions Europe

# INDUSTRIAL TECHNICAL CATALOGUE

(Honeywell Brand)

---

2019-2020

---



Honeywell Industrial Controls

---

1

---

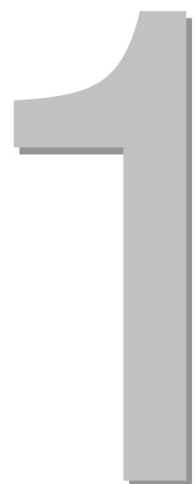
Unit conversion table

---

3



<b>SLATE system</b>	<b>1-2</b>
<b>Single Gas Valves</b>	<b>1-6</b>
<b>Dual Gas Valves</b>	<b>1-28</b>
<b>Burner Controls</b>	<b>1-49</b>
<b>Flame Sensors</b>	<b>1-54</b>
<b>Flame Switches</b>	<b>1-62</b>
<b>Industrial Flame Monitoring</b>	<b>1-66</b>
<b>Gas and Air Pressure Switches</b>	<b>1-87</b>
<b>Servo Motors</b>	<b>1-94</b>



# SLATE system

## SLATE(TM) Combustion Management System



R8001A1001

With the revolutionary integration of configurable safety and programmable logic, SLATE™ is easily customized for virtually any application in any industry, in less time, and with far less complexity.

Universal I/O scheme lets you choose how to use each module, and the customizable touchscreen display or PC web browser (optimized for Chrome™) allows you to easily change the end user experience.

- Burner management
- Steam generation
- Kilns and ovens
- Commercial and industrial boilers
- Make-up air
- Process heating



### Approvals

- **CE** approved: EN298 for burner controllers in continuous operation, EN12067-2 for electronic fuel/air ratio controllers and EN1854 for automatic valve proofing systems
- **SIL 3** "capable" certification
- **CSA/UL/FM** approved (US/CA)



### Protection class

IP00 / NEMA 1 (cabinet mounting)

### Ambient temperature

-10 ... 60 °C

### Maximum humidity

90 %rh



### Operation

Automatic

### Valve proofing system

Integrated



### Supply voltage

24 Vdc / 24..264 Vac

### Features

Easy installation, efficient operation and fast service because of:

- DIN-rail mounting (modular platform)
- On-board communications capabilities (Ethernet, Modbus, BACnet)
- Intuitive diagnostics (touch display, PC, smart phone)
- Optimized energy efficiency (O2 trim, VFD control)
- On-board system guides
- Status indicators (no blinking lights or fault codes)
- Plug-and-play replacement (configurable modular concept)
- Easy data backup (USB flash drive, SD cards)
- Compatible with flame rod and all existing Honeywell C70xx-series optical flame detectors by selection of correct Flame Amplifier Module.



### Note

Each SLATE™ system uses:

- A multi voltage (24 Vdc / 24..264 Vac) Base Module - R8001A1001, which mounts directly on the DIN rail.
- Up to 12 SLATE™ Modules can be connected to a single Base Module.
- Each of the plug-in modules uses its own a DIN rail mounting Sub Base - R8001S9001.

### Additional description

SLATE™ Online configurator (global site):

<https://combustion.honeywell.com/slate/>

- the online configurator simplifies selection of modules and system design
- One stop shop for downloading SLATE AX programming software, firmware upgrades and more
- Pre-configuration files are available for download to emulate most commonly used burner controllers

# SLATE system

## SLATE Configurable Safety Modules

Product description	Comment	Type
Base Module		<b>R8001A1001/U</b>
Burner Control Module	Needs sub base	<b>R8001B2001/U</b>
Fuel Air Ratio Module	Needs sub base	<b>R8001C6001/U</b>
Limit Control Module	Needs sub base	<b>R8001L8001/U</b>



R8001B2001



R8001C6001



R8001L8001

## SLATE Flame Amplifier Modules

Product description	Comment	Type
IR Ampli-Check Flame Amplifier Module	Needs sub base	<b>R8001F1041/U</b>
UV Shutter-Check Flame Amplifier Module	Needs sub base	<b>R8001S1051/U</b>
UV Ampli-Check Flame Amplifier Module	Needs sub base	<b>R8001S1071/U</b>
Rectification Ampli-Check Flame Amplifier Module	Needs sub base	<b>R8001V1031/U</b>



R8001F1041



R8001S1051



R8001S1071



R8001V1031

## SLATE Programmable Logic Modules

Product description	Comment	Type
Digital I/O Module	Needs sub base	<b>R8001D4001/U</b>
Annunciator Module	Needs sub base	<b>R8001N7001/U</b>
Analogue I/O Module	Needs sub base	<b>R8001U3001/U</b>



R8001D4001



R8001N7001



R8001U3001

# SLATE system

1



R8001K5001

## SLATE Additional Modules

Product description	Comment	Type
7" Web based Colour Touchscreen Display		R8001K5001/U
10" Web based Colour Touchscreen Display		R8001K1010/U
DIN rail Mounting Sub-base	One per module needed!	R8001S9001/U
SLATE Extension Cable		50096820-001/U
SLATE Connector Kit		32008001-002/U



R8001S9001

## SLATE Actuators(90 span)

Product description	Comment	Type
Actuator, 450 steps, 30s runtime, 5.5 Nm, IP40		R8001M1050/U
Actuator, 450 steps, 30s runtime, 17 Nm, IP40		R8001M1150/U
Actuator 900 steps, 15s runtime, 5.5 Nm, IP66		R8001M4050/U
Actuator 900 steps, 15s runtime, 17 Nm, IP66		R8001M4150/U
Actuator 33 or 101 Nm		MAXON-SMARTLINK-DS



R8001M1050



R8001M4050



SMARTLINK-DS

## SLATE PC Software

Product description	Comment	Type
SLATE AX PC software, based on Niagara AX		SLATEAXTOOL



## SLATE






Product description	Comment	Type
Impression of SLATE System mounted on a DIN rail		_SLATE



APPL-SLATESYSTEM



# SLATE system

Applicable flame detectors, refer to "Flame Sensors" chapter		
	Flame rod. Used with <b>R8001V1031/U</b> Flame Amplifier Module.	_C7008
C7008A	MiniPeeper UV detector, standard version. Intermittent operation. Used with <b>R8001S1071/U</b> Flame Amplifier Module.	_C7027
	MiniPeeper UV detector, with field replaceable UV tube and high temperature specification. Intermittent operation. Used with <b>R8001S1071/U</b> Flame Amplifier Module.	_C7035
C7027	MiniPeeper UV detector, with side view option. Intermittent operation. Used with <b>R8001S1071/U</b> Flame Amplifier Module.	_C7044
	PurplePeeper UV detector, standard version. Intermittent operation. Used with <b>R8001V1031/U</b> Flame Amplifier Module.	_C7012A/G
C7035	MiniPeeper self-checking UV detector. Continuous operation. Used with <b>R8001S1051/U</b> Flame Amplifier Module.	_C7061A1
	MiniPeeper self-checking UV detector. Continuous operation and ATEX-Z1 approved. Used with <b>R8001S1051/U</b> Flame Amplifier Module.	_C7061F1
C7044	MiniPeeper self-checking UV detector. Continuous operation and for use in hazardous locations (US/CA only). Used with <b>R8001S1051/U</b> Flame Amplifier Module.	_C7061F2
	Infrared detector. Continuous operation. Used with <b>R8001F1041/U</b> Flame Amplifier Module.	_C7915



# Single Gas Valves

1

## Solenoid gas valve, normally closed VE400AA



VE400AA



Class "A" AC powered, Safety Shutoff Solenoid Gas Valve.  
For pilot and small burner applications in gas power burners, gas boilers, ovens, furnaces and other gas consuming appliances.

Gas valve type	AC powered, non regulated ON/OFF normally closed, fast opening.
Media	natural gas, propane, air.
Materials	brass body for 1/4" version, aluminium body for others.
Approvals	CE (EN161), AGA
Pipe connection	Internal thread as per ISO 7/1 (Rp)
Threads type	BSP
Maximum opening time	1 s
Maximum closing time	1 s
Ambient temperature	-15 ... 60 °C
Protection class	IP65
Electrical connection	DIN plug

### 220...240 Vac versions

Valve dimension	Max. operating pressure mbar	Type
Rp 1/4	500	VE408AA1007

### 220...240 VRac versions (needs DIN plug with integrated rectifier)

Valve dimension	Max. operating pressure mbar	Type
Rp 1/4	500	VE408AA1049

### 110 Vac versions

Valve dimension	Max. operating pressure mbar	Type
Rp 1/4	500	VE408AA1015



CO020012

### Electrical connection

DIN Plug	CO020012
DIN Plug, with integrated rectifier	COMPM221

# Single Gas Valves

## Solenoid gas valve, normally closed VE4000A1



VE4000A



Class "A" Safety Shutoff Solenoid Gas Valve.

For control and regulation of gaseous fuels in gas power burners, gas boilers, ovens, furnaces and other gas consuming appliances.

Gas valve type	non regulated ON/OFF normally closed, fast opening.
Media	natural gas, propane, air.
Materials	aluminium die cast body.
Approvals	CE (EN161), AGA
Pipe connection	Internal thread as per ISO 7/1 (Rp)
Threads type	BSP
Maximum opening time	1 s
Maximum closing time	1 s
Ambient temperature	-15 ... 60 °C
Additional description	Some models have 4x pressure taps 1/4" (2x on each side), marked as "Bypass" in the selection table.

### 220...240 Vac versions

Valve dimension	Max. operating pressure mbar	Protection class	Electrical connection	Optional CPI-switch	Replacement coil	Comments	Type
Rp 3/8	360	IP54	PG11		BB052301	–	<b>VE4010A1006</b>
Rp 1/2	360	IP54	PG11		BB052301	–	<b>VE4015A1005</b>
Rp 1/2	360	IP65	DIN plug		BB052302	–	<b>VE4015A1070</b>
Rp 3/4	360	IP54	PG11	MS052501	BB052325	–	<b>VE4020A1005</b>
Rp 1	360	IP54	PG11	MS052501	BB052325	–	<b>VE4025A1004</b>
Rp 1	360	IP65	DIN plug	MS052501	BB052326DIN	–	<b>VE4025A1145</b>
Rp 1 1/4	200	IP54	PG11	MS054001	BB052340	–	<b>VE4032A1000</b>
Rp 1 1/4	200	IP54	PG11	MS054001	BB052340	–	<b>VE4032A1109</b>
Rp 1 1/2	200	IP54	PG11	MS054001	BB052340	–	<b>VE4040A1003</b>
Rp 1 1/2	200	IP54	PG11	MS054001	BB052340	Bypass	<b>VE4040A1144</b>
Rp 1 1/2	360	IP65	DIN plug	MS054001	BB052306DIN	–	<b>VE4040A1219</b>
Rp 2	200	IP54	PG11	MS055001	BB052303	–	<b>VE4050A1002</b>
Rp 2	360	IP65	DIN plug	MS055001	BB052303	–	<b>VE4050A1127</b>
Rp 2 1/2	200	IP54	PG11	MS056501	BB052365	–	<b>VE4065A1000</b>

### 110 Vac versions

Valve dimension	Max. operating pressure mbar	Protection class	Electrical connection	Optional CPI-switch	Replacement coil	Comments	Type
Rp 1/2	360	IP54	PG11		BB051102DIN	–	<b>VE4015A1013</b>
Rp 1/2	360	IP65	DIN plug		BB051102DIN	–	<b>VE4015A1138</b>
Rp 3/4	200	IP54	PG11	MS052501	BB051125	–	<b>VE4020A1054</b>
Rp 1	200	IP54	PG11	MS052501	BB051125	–	<b>VE4025A1053</b>
Rp 1	360	IP65	DIN plug	MS052501	BB051126DIN	–	<b>VE4025A1194</b>
Rp 1 1/2	200	IP54	PG11	MS054001		–	<b>VE4040A1052</b>
Rp 1 1/2	360	IP65	DIN plug	MS054001		–	<b>VE4040A1227</b>
Rp 2	200	IP54	PG11	MS055001	BB051152DIN	–	<b>VE4050A1051</b>
Rp 2	360	IP65	DIN plug	MS055001	BB051154DIN	–	<b>VE4050A1184</b>

# Single Gas Valves

1



CO020012

## Electrical connection

DIN plug	CO020012
----------	----------

## CPI Switch for VE-series valves with bottom plug (1/4")

CPI Switch for VExxxxA/B/C/S DN20-25	MS052501
CPI Switch for VExxxxA/B/C and VG4xxx DN32-40	MS054001
CPI Switch for VExxxxA/B/C and VG4xxx DN50	MS055001
CPI Switch for VExxxxA1 and VG4xxx DN65-80	MS056501



MS05

## Replacement coils

Replacement coil	BB052301
Replacement coil	BB052302
Replacement coil	BB052325
Replacement coil	BB052326DIN
Replacement coil	BB052340
Replacement coil	BB052306DIN
Replacement coil	BB052303
Replacement coil	BB052365
Replacement coil	BB051102DIN
Replacement coil	BB051125
Replacement coil	BB051126DIN
Replacement coil	BB051152DIN
Replacement coil	BB051154DIN

# Single Gas Valves

## Solenoid gas valve, normally closed VE4000A3



VE4000A3



Class "A" Safety Shutoff Solenoid Gas Valve.

For control and regulation of gaseous fuels in gas power burners, gas boilers, ovens, furnaces and other gas consuming appliances.

Gas valve type	non regulated ON/OFF normally closed, fast opening.
Media	natural gas, propane, air.
Materials	aluminium die cast body.
Approvals	CE (EN161), AGA
Pipe connection	PN16 Flanges as per EN 1092-1
Maximum opening time	1 s
Maximum closing time	1 s
Ambient temperature	-15 ... 60 °C

### 220...240 Vac versions

Valve dimension	Max. operating pressure mbar	Protection class	Electrical connection	Optional CPI-switch	Replacement coil	Type
DN65	360	IP65	DIN plug	MS058001	BB052381DIN	<b>VE4065A3022</b>
DN80	360	IP65	DIN plug	MS058001	BB052382DIN	<b>VE4080A3021</b>
DN100	200	IP54	PG11	MS051001	BB152300	<b>VE4100A3001</b>
DN100	360	IP65	DIN plug	MS051001		<b>VE4100A3068</b>

### 110 Vac versions

Valve dimension	Max. operating pressure mbar	Protection class	Electrical connection	Optional CPI-switch	Replacement coil	Type
DN65	360	IP65	DIN plug	MS058001	BB051181DIN	<b>VE4065A3030</b>
DN80	360	IP65	DIN plug	MS058001	BB051105DIN	<b>VE4080A3039</b>
DN100	360	IP65	DIN plug	MS051001		<b>VE4100A3076</b>

### Electrical connection

DIN plug	<b>CO020012</b>
CPI Switch for VE4100A	<b>MS051001</b>

### CPI Switch for VE-series valves with bottom plug (1/4")

CPI Switch for VE4065/80	<b>MS058001</b>
CPI Switch for VE4100A	<b>MS051001</b>

### Replacement coils

Replacement coil	<b>BB052381DIN</b>
Replacement coil	<b>BB052382DIN</b>
Replacement coil	<b>BB152300</b>
Replacement coil	<b>BB051181DIN</b>
Replacement coil	<b>BB051105DIN</b>



CO020012



MS05

# Single Gas Valves

## Solenoid gas valve, normally closed, with flow rate adjustment VE4000B1



VE4000B1



Class "A" Safety Shutoff Solenoid Gas Valve, with maximum flow rate adjustment.  
For control and regulation of gaseous fuels in gas power burners, gas boilers, ovens, furnaces and other gas consuming appliances.

Gas valve type	non regulated ON/OFF normally closed, fast opening, with maximum flow rate adjustment.
Media	natural gas, propane, air. Special versions for biogas available upon request.
Materials	aluminium die cast body.
Approvals	CE (EN161), AGA
Pipe connection	Internal thread as per ISO 7/1 (Rp)
Threads type	BSP
Maximum opening time	1 s
Maximum closing time	1 s
Ambient temperature	-15 ... 60 °C
Additional description	<ul style="list-style-type: none"> <li>• The maximum flow rate can be adjusted on top of the valve</li> <li>• Optional Closed Position Indication Switch (CPI switch) can be ordered separately.</li> </ul>

### 220...240 Vac versions

Valve dimension	Max. operating pressure mbar	Protection class	Electrical connection	Optional CPI-switch	Replacement coil	Comments	Type
Rp 3/8	360	IP65	DIN plug			-	<b>VE4010B1062</b>
Rp 1/2	360	IP54	PG11		BB152301	-	<b>VE4015B1004</b>
Rp 1/2	360	IP65	DIN plug		BB152305	-	<b>VE4015B1087</b>
Rp 3/4	360	IP54	PG11	MS052501	BB152325	-	<b>VE4020B1004</b>
Rp 3/4	360	IP54	PG11	MS052501	BB152325	-	<b>VE4020B1046</b>
Rp 3/4	360	IP65	DIN plug	MS052501	BB152324	-	<b>VE4020B1137</b>
Rp 1	200	IP54	PG11	MS052501	BB152325	-	<b>VE4025B1003</b>
Rp 1	360	IP54	PG11	MS052501	BB152325	-	<b>VE4025B1045</b>
Rp 1	360	IP65	DIN plug	MS052501	BB152325	-	<b>VE4025B1102</b>
Rp 1 1/4	360	IP65	DIN plug	MS054001		-	<b>VE4032B1116</b>
Rp 1 1/2	200	IP54	PG11	MS054001	BB152326	-	<b>VE4040B1002</b>
Rp 1 1/2	360	IP54	PG11	MS054001	BB152340	-	<b>VE4040B1044</b>
Rp 1 1/2	360	IP65	DIN plug	MS054001		Viton	<b>VE4040B1119</b>
Rp 1 1/2	360	IP65	DIN plug	MS054001		-	<b>VE4040B1135</b>
Rp 2	200	IP54	PG11	MS055001	BB152340	-	<b>VE4050B1001</b>
Rp 2	360	IP54	PG11	MS055001	BB152303	-	<b>VE4050B1043</b>
Rp 2	360	IP65	DIN plug	MS055001	BB152307	-	<b>VE4050B1118</b>
Rp 2 1/2	200	IP54	PG11	MS058001	BB152365	-	<b>VE4065B1017</b>
Rp 3	200	IP54	PG11	MS058001	BB152380	-	<b>VE4080B1016</b>

### 110 Vac versions

Valve dimension	Max. operating pressure mbar	Protection class	Electrical connection	Optional CPI-switch	Replacement coil	Comments	Type
Rp 3/8	360	IP65	DIN plug			-	<b>VE4010B1054</b>
Rp 1/2	200	IP54	PG11		BB151101	-	<b>VE4015B1012</b>
Rp 1/2	360	IP65	DIN plug		BB151107	-	<b>VE4015B1095</b>
Rp 3/4	360	IP65	PG11	MS052501	BB151125	-	<b>VE4020B1129</b>
Rp 1	360	IP54	PG11	MS052501	BB151125	-	<b>VE4025B1078</b>
Rp 1	360	IP65	DIN plug	MS052501	BB151125	Viton	<b>VE4025B1110</b>
Rp 1	360	IP65	DIN plug	MS052501	BB151125	-	<b>VE4025B1128</b>

# Single Gas Valves

Valve dimension	Max. operating pressure mbar	Protection class	Electrical connection	Optional CPI-switch	Replacement coil	Comments	Type
Rp 1 1/4	360	IP65	DIN plug	MS054001	BB151104	–	<b>VE4032B1108</b>
Rp 1 1/2	360	IP65	DIN plug	MS054001	BB151104	–	<b>VE4040B1127</b>
Rp 2	360	IP65	DIN plug	MS055001	BB151153	–	<b>VE4050B1126</b>

### Electrical connection



CO020012

DIN plug	CO020012
----------	----------

### CPI Switch for VE-series valves with bottom plug (1/4")

CPI Switch for VExxxxA/B/C/S DN20-25	MS052501
CPI Switch for VExxxxA/B/C and VG4xxx DN32-40	MS054001
CPI Switch for VExxxxA/B/C and VG4xxx DN50	MS055001
CPI Switch for VExxxxA1 and VG4xxx DN65-80	MS056501
CPI Switch for VExxxxB DN65-80	MS058001



MS05

### Replacement coils

Replacement coil	BB152301
Replacement coil	BB152305
Replacement coil	BB152325
Replacement coil	BB152324
Replacement coil	BB152326
Replacement coil	BB152340
Replacement coil	BB152303
Replacement coil	BB152307
Replacement coil	BB152365
Replacement coil	BB152380
Replacement coil	BB151101
Replacement coil	BB151107
Replacement coil	BB151125
Replacement coil	BB151104
Replacement coil	BB151153

# Single Gas Valves

1

## Solenoid gas valve, normally closed, flanged connections VE4000B3



VE4000B3



Class "A" Safety Shutoff Solenoid Gas Valve with flanged connections.  
For control and regulation of gaseous fuels in gas power burners, gas boilers, ovens, furnaces and other gas consuming appliances.

Gas valve type	non regulated ON/OFF normally closed, fast opening
Media	natural gas, propane, air. Special versions for biogas available upon request
Materials	aluminium die cast body
Approvals	CE (EN161), AGA
Pipe connection	PN16 Flanges as per EN 1092-1
Maximum opening time	1 s
Maximum closing time	1 s
Ambient temperature	-15 ... 60 °C
Additional description	<ul style="list-style-type: none"> <li>• Adjustable maximum flow rate on top of the coil.</li> <li>• 4 auxiliary pressure taps with Rp 1/4" threaded connections, 2 on the inlet side, 2 on the outlet side.</li> <li>• Other voltages are also available.</li> <li>• Optional Closed Position Indication Switch (CPI switch ) is ordered separately.</li> </ul>

### 220...240 Vac versions

Valve dimension	Max. operating pressure mbar	Protection class	Electrical connection	Optional CPI-switch	Replacement coil	Type
DN65	200	IP54	PG11	MS058001	BB152365	<b>VE4065B3005</b>
DN65	360	IP54	PG11	MS058001	BB152380	<b>VE4065B3039</b>
DN65	360	IP65	DIN plug	MS058001		<b>VE4065B3153</b>
DN80	200	IP54	PG11	MS058001	BB152380	<b>VE4080B3004</b>
DN80	360	IP54	PG11	MS058001	BB152382	<b>VE4080B3038</b>
DN80	360	IP65	DIN plug	MS058001		<b>VE4080B3178</b>
DN100	200	IP54	PG11	MS051001	BB152300	<b>VE4100B3000</b>
DN100	360	IP54	PG11	MS051001		<b>VE4100B3034</b>

### 110 Vac versions

Valve dimension	Max. operating pressure mbar	Protection class	Electrical connection	Optional CPI-switch	Replacement coil	Type
DN65	360	IP54	PG11	MS058001	BB151180	<b>VE4065B3047</b>
DN65	360	IP65	DIN plug	MS058001		<b>VE4065B3161</b>
DN80	360	IP54	PG11	MS058001		<b>VE4080B3046</b>

### Electrical connection

DIN Plug CO020012

### CPI Switch for VE-series valves with bottom plug (1/4")

CPI Switch for VExxxxB DN65-80	MS058001
CPI Switch for VE4100A DN100	MS051001

### Replacement coils

Replacement coil	BB152365
Replacement coil	BB152380
Replacement coil	BB152382
Replacement coil	BB152300
Replacement coil	BB151180
Replacement coil	BB151108



CO020012



MS05



# Single Gas Valves

## Solenoid gas valve, normally closed, with characterized opening VE4000C1



VE4000C1



Class "A" Safety Shutoff Solenoid Gas Valve, with maximum flow rate adjustment and characterized opening.

For control and regulation of gaseous fuels in gas power burners, gas boilers, ovens, furnaces and other gas consuming appliances.

Gas valve type	non regulated ON/OFF normally closed, slow opening, with maximum flow rate adjustment
Media	natural gas, propane, air. Special versions for biogas available upon request
Materials	aluminium die cast body
Approvals	CE (EN161), AGA
Pipe connection	Internal thread as per ISO 7/1 (Rp)
Threads type	BSP
Maximum opening time	30 s
Maximum closing time	1 s
Ambient temperature	-15 ... 60 °C
Additional description	<ul style="list-style-type: none"> <li>• The maximum flow rate and the opening characteristics can be adjusted on top of the valve.</li> <li>• Optional Closed Position Indication Switch (CPI switch ) is ordered separately.</li> </ul>

### 220...240 Vac versions

Valve dimension	Max. operating pressure mbar	Protection class	Electrical connection	Optional CPI-switch	Replacement coil	Type
Rp 1/2	360	IP54	PG11		BB152301	<b>VE4015C1003</b>
Rp 1/2	360	IP65	DIN plug		BB152305	<b>VE4015C1110</b>
Rp 3/4	360	IP54	PG11	MS052501	BB152325	<b>VE4020C1003</b>
Rp 3/4	360	IP54	DIN plug	MS052501		<b>VE4020C1060</b>
Rp 3/4	360	IP65	DIN plug	MS052501	BB152324	<b>VE4020C1086</b>
Rp 1	360	IP54	PG11	MS052501	BB152325	<b>VE4025C1002</b>
Rp 1	360	IP54	DIN plug	MS052501		<b>VE4025C1085</b>
Rp 1	360	IP65	DIN plug	MS052501	BB152324	<b>VE4025C1119</b>
Rp 1 1/4	360	IP54	PG11	MS054001	BB152340	<b>VE4032C1032</b>
Rp 1 1/2	200	IP54	PG11	MS054001	BB152326	<b>VE4040C1001</b>
Rp 1 1/2	360	IP65	DIN plug	MS054001	BB152342DIN	<b>VE4040C1175</b>
Rp 2	200	IP54	PG11	MS055001	BB152340	<b>VE4050C1000</b>
Rp 2	360	IP65	DIN plug	MS055001	BB152307DIN	<b>VE4050C1117</b>

### 110 Vac versions

Valve dimension	Max. operating pressure mbar	Protection class	Electrical connection	Optional CPI-switch	Replacement coil	Type
Rp 1/2	360	IP65	DIN plug		BB151107DIN	<b>VE4015C1128</b>
Rp 1	360	IP65	DIN plug	MS052501		<b>VE4025C1127</b>
Rp 1 1/4	360	IP65	DIN plug	MS054001		<b>VE4032C1065</b>
Rp 1 1/2	360	IP65	DIN plug	MS054001		<b>VE4040C1167</b>

# Single Gas Valves

1



CO020012

## Electrical connection

DIN plug	CO020012
----------	----------

## CPI Switch for VE-series valves with bottom plug (1/4")

CPI Switch for VExxxxA/B/C/S DN20-25	MS052501
CPI Switch for VExxxxA/B/C and VG4xxx DN32-40	MS054001
CPI Switch for VExxxxA/B/C and VG4xxx DN50	MS055001



MS05

## Replacement parts

Replacement retarder for VE4xxxC-series DN10..25 and VQ4xxMC-series DN20-DN25	KTGRFR01
Replacement retarder for VE4xxxC-series DN32..50 and VQ4xxMC-series DN40-DN50	KTGRFR02

## Replacement coils

Replacement coil	BB152301
Replacement coil	BB152305
Replacement coil	BB152325
Replacement coil	BB152324
Replacement coil	BB152340
Replacement coil	BB152326
Replacement coil	BB152342DIN
Replacement coil	BB152307DIN
Replacement coil	BB151107DIN

# Single Gas Valves

## Solenoid gas valve, normally open VE4000S



VE4000S1



Solenoid Gas Valve normally open.

The VE4000S1 and VE4000S2 series gas valves are safety relief solenoid valves used as vent valves in gas power burners, gas boilers, ovens, furnaces and other gas consuming appliances.

Gas valve type	non regulated ON/OFF normally open
Media	natural gas, propane, air
Materials	aluminium die cast body
Approvals	CE (EN161), AGA
Pipe connection	Internal thread as per ISO 7/1 (Rp)
Threads type	BSP
Max. operating pressure	360 mbar
Maximum opening time	1 s
Maximum closing time	1 s
Ambient temperature	-15 ... 60 °C
Protection class	IP54
Electrical connection	PG11
Additional description	<ul style="list-style-type: none"> <li>• The VE4000S1 series are without Closed Position Indication (CPI) Switch, which can be ordered and installed separately.</li> <li>• The VE4000S2 series have the CPI switch factory installed.</li> </ul>

### VE4000S1 Series (220...240Vac)

Valve dimension	Optional CPI-switch	Replacement coil	Type
Rp 3/4	MS052501	BB152302	<b>VE4020S1038</b>
Rp 1	MS052501	BB152302	<b>VE4025S1037</b>

### VE4000S1 Series (110Vac)

Valve dimension	Optional CPI-switch	Replacement coil	Type
Rp 3/4	MS052501	BB151101	<b>VE4020S1046</b>
Rp 1	MS052501	BB151101	<b>VE4025S1045</b>



VE4000S2

### VE4000S2 Series with factory installed CPI switch (220...240Vac)

Valve dimension	Optional CPI-switch	Replacement coil	Type
Rp 3/4	included	BB152302	<b>VE4020S2044</b>
Rp 1	included	BB152302	<b>VE4025S2035</b>

### CPI Switch for VE-series valves with bottom plug (1/4")

CPI Switch for VExxxxA/B/C/S DN20-25	<b>MS052501</b>
--------------------------------------	-----------------



MS05

### Replacement coils

Replacement coil	<b>BB152302</b>
Replacement coil	<b>BB151101</b>

# Single Gas Valves

---

1



# Single Gas Valves

## Safety shut-off gas valve, normally closed for North American market V4295A1



V4295A1



Class "B" Safety Shutoff Gas Valve,  
For control and regulation of gaseous fuels in gas power burners, gas boilers, ovens, furnaces and other gas consuming appliances.

Gas valve type	non regulated ON/OFF normally closed, fast opening.
Media	natural gas, propane, air. Special versions for biogas available upon request.
Materials	aluminium die cast body.
Approvals	CSA, AGA
Pipe connection	Internal threads
Threads type	NPT
Maximum opening time	1 s
Maximum closing time	1 s
Ambient temperature	-40 ... 63 °C
Additional description	Upstream and downstream taps 1/4" NPT

### 120 Vac versions

Valve dimension	Max. operating pressure mbar	Type
Rp 1/2	140	V4295A1015
Rp 3/4	140	V4295A1023
Rp 1	140	V4295A1031
Rp 1 1/4	140	V4295A1049
Rp 1 1/2	140	V4295A1056
Rp 2	140	V4295A1064
Rp 2 1/2	140	V4295A1072
Rp 3	140	V4295A1080
Rp 3/8	350	V4295A1098
Rp 1/2	350	V4295A1106
Rp 3/4	350	V4295A1114
Rp 1	350	V4295A1122
Rp 1 1/4	350	V4295A1130
Rp 1 1/2	350	V4295A1148/U
Rp 2	350	V4295A1155

### 24 Vac versions

Valve dimension	Max. operating pressure mbar	Type
Rp 1/2	140	V8295A1016
Rp 3/4	140	V8295A1024
Rp 1	140	V8295A1032
Rp 1 1/4	140	V8295A1040
Rp 1 1/2	140	V8295A1057
Rp 2	140	V8295A1065

# Single Gas Valves

## Safety shut-off gas valve, normally open for North American market V4295S1



V4295A1122



Class "B" Safety Shutoff Gas Valve,  
For control and regulation of gaseous fuels in gas power burners, gas boilers, ovens, furnaces and other gas consuming appliances.

Gas valve type	non regulated ON/OFF normally OPEN (vent), fast closing.
Media	natural gas, propane, air.
Materials	aluminium die cast body.
Approvals	CSA, AGA
Pipe connection	Internal threads
Threads type	NPT
Max. operating pressure	140 mbar
Maximum opening time	1 s
Maximum closing time	1 s
Ambient temperature	-40 ... 63 °C
Additional description	Upstream and downstream taps 1/4" NPT

### 120 Vac versions

Valve dimension	Type
Rp 3/4	V4295S1005
Rp 1	V4295S1013
Rp 1 1/4	V4295S1021

### 24 Vac versions

Valve dimension	Type
Rp 3/4	V8295S1006

# Single Gas Valves

---

1





# Single Gas Valves

---

1



# Single Gas Valves

## Pneumatic shut off gas valve, normally closed type 8000



MAXON8000



Automatic shut off valve for use with variety of gaseous media.  
For use with industrial burners on ovens, furnaces and other gas consuming appliances.  
Connections:

- ISO 7-1 threaded or DIN PN16 Flanged
- **Available on request:** Special versions with NPT pipe thread, ANSI Flanged or with Socket welded nipple.

Other options, available on request:

- special firesafe- and NACE versions
- partial stroke testing

Gas valve type	Pneumatic actuated shut off valve
Media	Natural gas, propane, butane, hydrogen <ul style="list-style-type: none"> <li>• <b>Available on request:</b> Special versions for oxygen, coke oven gas, refinery gas, biogas.</li> </ul>
Ambient temperature	-40 ... 100 °C
Materials	Carbon or stainless steel body <ul style="list-style-type: none"> <li>• <b>Available on request:</b> Special versions for low temperatures (till -50C).</li> </ul>
Approvals	<ul style="list-style-type: none"> <li>• GAD, EN161, PED, FM, AGA, TR (Russia)</li> <li>• SIL-3 Capable (meets IEC61508)</li> <li>• <b>Available on request:</b> UL, CSA, KTL and/or INMETRO approved models</li> </ul>

Maximum closing time	1 s
Note	<ul style="list-style-type: none"> <li>• Maximum operating pressures to be reduced with <b>25%</b> when used with hydrogen (H<sub>2</sub>)</li> </ul>

Additional description

**Operating Environment:**

- Actuators are rated for NEMA 4, IP65 or optional NEMA 4X, IP65.
- Ambient temperature range of -40C to 60C for the 8111 models; option of -50C to 60C also available.
- Ambient temperature range of -40C to 50C for the 8113 models; option of -50C to 50C also available.
- All valves for oxygen service or using Ethylene Propylene body seals are limited to a minimum ambient and fluid temperature of -17C.

### 230 Vac, 50/60 Hz versions

Valve dimension	Pipe connection	Threads type	Max. operating pressure bar	Product description	Type
Rp 1	Internal threads	BSP	17.6	SSOV 100S8111-CA22-D1B03	<b>324721A</b>
Rp 1 1/2	Internal threads	BSP	17.6	SSOV 150S8111-CA22-D1B03	<b>324722A</b>
Rp 2	Internal threads	BSP	17.6	SSOV 200S8111-CA22-D1B03	<b>324723A</b>
DN65	Flanges	–	12.1	SSOV 250C8111-DA22-D1B03	<b>324724A</b>
DN80	Flanges	–	9.3	SSOV 300C8111-DA22-D1B03	<b>324726A</b>
DN100	Flanges	–	9.3	SSOV 400C8111-DA22-D1B03	<b>324727A</b>

# Single Gas Valves

## 120 Vac, 50/60 Hz versions

Valve dimension	Pipe connection	Threads type	Max. operating pressure bar	Product description	Type
Rp 1	Internal threads	BSP	17.6	SSOV 100S8111-CA22-A1B03	<b>324721B</b>
Rp 1 1/2	Internal threads	BSP	17.6	SSOV 150S8111-CA22-A1B03	<b>324722B</b>
Rp 2	Internal threads	BSP	17.6	SSOV 200S8111-CA22-A1B03	<b>324723B</b>
DN65	Flanges	–	12.1	SSOV 250C8111-DA22-A1B03	<b>324724B</b>
DN80	Flanges	–	9.3	SSOV 300C8111-DA22-A1B03	<b>324726B</b>
DN100	Flanges	–	9.3	SSOV 400C8111-DA22-A1B03	<b>324727B</b>

## 24 Vdc versions

Valve dimension	Pipe connection	Threads type	Max. operating pressure bar	Product description	Type
Rp 1	Internal threads	BSP	17.6	SSOV 100S8111-CA22-G1B03	<b>324721C</b>
Rp 1 1/2	Internal threads	BSP	17.6	SSOV 150S8111-CA22-G1B03	<b>324722C</b>
Rp 2	Internal threads	BSP	17.6	SSOV 200S8111-CA22-G1B03	<b>324723C</b>
DN65	Flanges	–	12.1	SSOV 250C8111-DA22-G1B03	<b>324724C</b>
DN80	Flanges	–	9.3	SSOV 300C8111-DA22-G1B03	<b>324726C</b>
DN100	Flanges	–	9.3	SSOV 400C8111-DA22-G1B03	<b>324727C</b>

## 24 Vdc versions, ATEX Cat.2GD

Valve dimension	Pipe connection	Threads type	Max. operating pressure bar	Product description	Type
Rp 1	Internal threads	BSP	17.6	SSOV 100S8113-CA22-J1B03	<b>324721J</b>
Rp 1 1/2	Internal threads	BSP	17.6	SSOV 150S8113-CA22-J1B03	<b>324722J</b>
Rp 2	Internal threads	BSP	17.6	SSOV 200S8113-CA22-J1B03	<b>324723J</b>
DN65	Flanges	–	12.1	SSOV 250C8113-DA22-J1B03	<b>324724J</b>
DN80	Flanges	–	9.3	SSOV 300C8113-DA22-J1B03	<b>324726J</b>
DN100	Flanges	–	9.3	SSOV 400C8113-DA22-J1B03	<b>324727J</b>

# Single Gas Valves

## Electro Mechanical gas valve, normally closed type MA

Automatic shut off valve for use with variety of gaseous media.  
For use with industrial burners on ovens, furnaces and other gas consuming appliances.  
Connections:

- ISO 7-1 threaded or DIN PN16 Flanged
- **Available on request:** Special versions with NPT pipe thread, ANSI Flanged or with Socket welded nipple.



MAXON-MA



Gas valve type	Electro mechanically actuated shut off valve
Media	Natural gas, propane, butane, hydrogen <ul style="list-style-type: none"> <li>• <b>Available on request:</b> Special versions for oxygen, coke oven gas, refinery gas, biogas.</li> </ul>
Ambient temperature	-40 ... 60 °C
Materials	Carbon steel body <ul style="list-style-type: none"> <li>• <b>Available on request:</b> Special versions with stainless steel or low temperature carbon steel (as low as -50C).</li> </ul>
Approvals	<ul style="list-style-type: none"> <li>• GAD, EN161, PED, FM, AGA, TR (Russia)</li> <li>• SIL-3 Capable (meets IEC61508)</li> <li>• <b>Available on request:</b> UL and CSA approved models</li> </ul>
Maximum closing time	1 s
Electrical connection	screw terminals
Protection class	NEMA 4 (IP65)
Note	<ul style="list-style-type: none"> <li>• Maximum operating pressures to be reduced with <b>25%</b> when used with hydrogen (H<sub>2</sub>)</li> </ul>

### 230 Vac, 50/60 Hz versions

Valve dimension	Pipe connection	Threads type	Max. operating pressure bar	Product description	Type
Rp 1	Internal threads	BSP	8.62	5000 100SMA11 CA22-CC13B0	<b>325521A</b>
Rp 1 1/2	Internal threads	BSP	4.83	5000 150SMA11 CA22-CC13B0	<b>325522A</b>
Rp 2	Internal threads	BSP	4.83	5000 200SMA11 CA22-CC13B0	<b>325523A</b>
DN65	Flanges	–	3.45	5000 250CMA11 DA22-CC23B0	<b>325531A</b>
DN80	Flanges	–	2.76	5000 300CMA11 DA22-CC23B0	<b>325532A</b>
DN100	Flanges	–	2.76	5000 400CMA11 DA22-CC23B0	<b>325533A</b>

### 120 Vac, 50/60 Hz versions

Valve dimension	Pipe connection	Threads type	Max. operating pressure bar	Product description	Type
Rp 1	Internal threads	BSP	8.62	5000 100SMA11 CA22-AA13B0	<b>325521B</b>
Rp 1 1/2	Internal threads	BSP	4.83	5000 150SMA11 CA22-AA13B0	<b>325522B</b>
Rp 2	Internal threads	BSP	4.83	5000 200SMA11 CA22-AA13B0	<b>325523B</b>
DN65	Flanges	–	3.45	5000 250CMA11 DA22-AA23B0	<b>325531B</b>
DN80	Flanges	–	2.76	5000 300CMA11 DA22-AA23B0	<b>325532B</b>
DN100	Flanges	–	2.76	5000 400CMA11 DA22-AA23B0	<b>325533B</b>

### 24 Vdc versions

Valve dimension	Pipe connection	Threads type	Max. operating pressure bar	Product description	Type
Rp 1	Internal threads	BSP	8.62	5000 100SMA11 CA22-FE24B0	<b>325521C</b>
Rp 1 1/2	Internal threads	BSP	4.83	5000 150SMA11 CA22-FE24B0	<b>325522C</b>
Rp 2	Internal threads	BSP	4.83	5000 200SMA11 CA22-FE24B0	<b>325523C</b>
DN65	Flanges	–	3.45	5000 250CMA11 DA22-FE24B0	<b>325531C</b>
DN80	Flanges	–	2.76	5000 300CMA11 DA22-FE24B0	<b>325532C</b>
DN100	Flanges	–	2.76	5000 400CMA11 DA22-FE24B0	<b>325533C</b>



# Dual Gas Valves

1

## Combination valve VQ-Modular

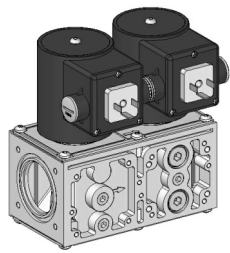
Class "A" Combination Gas Valve, up to 2" connection size. Special flanges are available for pipe sizes from 1/2" up to 2". Modular design:

- other valves can be fitted to each side of the valve body, such as a vent valve, pilot valve or external bypass valve;
- special gas pressure switch models are available for direct mounting on either side of the valve body.

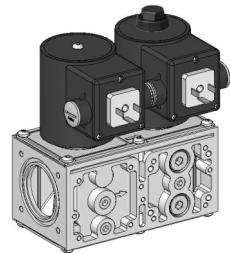
For control and regulation of gaseous fuels in gas power burners, gas boilers, ovens, furnaces and other gas consuming appliances.



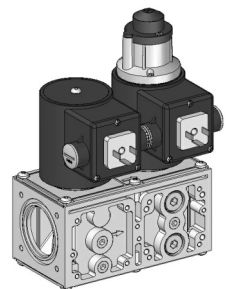
VQ-MODULAR



VQ425MA



VQ425MB-1



VQ425MC

Gas valve type

2 safety shutoff valves in series, without pressure regulator.

First safety valve V1

Always fast opening.

Second safety valve V2

Available models:

- MA - fast open
- MB - fast open with flow rate adjuster (factory set at fully open)
- MC - adjustable slow open (1..30 sec) with flow rate adjuster and step-open feature (factory settings: no step, ca. 6 sec slow-open and maximum flow)

Port connection

Honeywell flanges

Media

Designed for use with natural gas, butane or propane.

Materials

- Valve body: aluminium die cast body.
- Closing spring: AISI 302 steel.
- Valve plunger: Chrome plated Fe 360B steel sliding on anti-friction bearing.
- Seals and gaskets: Hydrocarbon resistant NBR rubber type.

Approvals

- CE (EN161), AGA

Note

- The VQ-Modular is designed for a maximum operating frequency of one cycle per minute.
- The small body size models are designed for ca. 500k cycles of operation.
- The large body size models are designed for ca. 300k cycles of operation.
- **IMPORTANT:** the VQ-Modular does not have an integrated screen at the inlet. For the inlet side always use flange models **KTCOMSxx** and for the outlet side flange models **KTCOMBxx**. KTCOMSxx can also be ordered for use at the outlet side, but then the included screen must be removed.

Max. operating pressure

360 mbar

Ambient temperature

-15 ... 60 °C

Maximum closing time

1 s

Additional description

- The valve solenoids are suitable for permanent energizing, such as applications in continuous operation.
- Various pressure tap points are available on both sides of the valve body as well as on the flanges.
- An optional Closed Position Indication Switch (CPI) can be mounted on the bottom of the first safety valve V1



# Dual Gas Valves

## VQ-Modular series dual valve

Supply voltage	Valve size inch	Maximum opening time s	Electrical connection	Protection class	Power consumption W	Maximum flow m <sup>3</sup> /h	Optional CPI-switch	Spare coil V1	Spare coil V2	Type
115/230 Vac	3/4 .. 2	–	PG11 or DIN plug	IP54 or IP65	15	8	MS06-series	See table	See table. Not for MC.	_VQ4xxMx

## First and second valve fast opening (\* General features: Viton)

Supply voltage	Valve size inch	Maximum opening time s	Electrical connection	Protection class	Power consumption W	Maximum flow m <sup>3</sup> /h	Optional CPI-switch	Spare coil V1	Spare coil V2	Type
230 Vac	3/4	1	PG11	IP54	15	8	MS062001	BB052302PG	BB052302PG	VQ420MA1004
230 Vac	3/4	1	DIN plug	IP65	15	8	MS062001	BB052302DIN	BB052305DIN	VQ420MA1012
230 Vac	1	1	PG11	IP54	21.1	11	MS062501	BB052326PG	BB052326PG	VQ425MA1005
230 Vac	1	1	DIN plug	IP65	21.1	11	MS062501	BB052326DIN	BB052326DIN	VQ425MA1013
115 Vac	1	1	DIN plug	IP65	23.9	11	MS062501	BB051126DIN	BB051126DIN	VQ425MA1038
230 Vac	1.1/2	1	PG11	IP54	46.5	31	MS064001	BB052306PG	BB052306PG	VQ440MA1006
230 Vac	1.1/2	1	DIN plug	IP65	46.5	31	MS064001	BB052306DIN	BB052306DIN	VQ440MA1014
115 Vac	1.1/2	1	DIN plug	IP65	46.5	31	MS064001	BB051152DIN	BB051152DIN	VQ440MA1030
230 Vac	1.1/2	1	DIN plug	IP65	46.5	31	MS064001	BB052306DIN	BB052306DIN	VQ440MA1048*
230 Vac	2	1	PG11	IP54	61	40	MS065001	BB052309PG	BB052309PG	VQ450MA1007
230 Vac	2	1	DIN plug	IP65	61	40	MS065001	BB052309DIN	BB052309DIN	VQ450MA1015

## First valve fast opening. Second valve fast opening and with flow rate adjuster

Supply voltage	Valve size inch	Maximum opening time s	Electrical connection	Protection class	Power consumption W	Maximum flow m <sup>3</sup> /h	Optional CPI-switch	Spare coil V1	Spare coil V2	Type
230 Vac	3/4	1	PG11	IP54	15	8	MS062001	BB052302PG	BB152305PG	VQ420MB1003
230 Vac	1	1	PG11	IP54	21.1	11	MS062501	BB052326PG	BB152324PG	VQ425MB1004
230 Vac	1	1	DIN plug	IP65	21.1	11	MS062501	BB052326DIN	BB152324DIN	VQ425MB1012
230 Vac	1.1/2	1	PG11	IP54	46.5	31	MS064001	BB052306PG	BB152342PG	VQ440MB1005
230 Vac	1.1/2	1	DIN plug	IP65	46.5	31	MS064001	BB052306DIN	BB152342DIN	VQ440MB1013
230 Vac	2	1	PG11	IP54	61	40	MS065001	BB052309PG	BB152307PG	VQ450MB1006
230 Vac	2	1	DIN plug	IP65	61	40	MS065001	BB052309DIN	BB152307DIN	VQ450MB1014

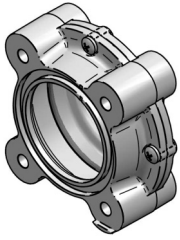
## First valve fast opening. Second valve adjustable slow opening, step-open and flow rate adjuster

(\* General features: Factory mounted 1" by-pass valve)

Supply voltage	Valve size inch	Maximum opening time s	Electrical connection	Protection class	Power consumption W	Maximum flow m <sup>3</sup> /h	Optional CPI-switch	Spare coil V1	Spare coil V2	Type
230 Vac	3/4	30	PG11	IP54	15	8	MS062001	BB052302PG	–	VQ420MC1002
230 Vac	1	30	PG11	IP54	21.1	11	MS062501	BB052326PG	–	VQ425MC1003
230 Vac	1	30	DIN plug	IP65	21.1	11	MS062501	BB052326DIN	–	VQ425MC1011
230 Vac	1.1/2	30	PG11	IP54	46.5	31	MS064001	BB052306PG	–	VQ440MC1004
230 Vac	1.1/2	30	DIN plug	IP65	46.5	31	MS064001	BB052306DIN	–	VQ440MC1012
230 Vac	2	30	PG11	IP54	61	40	MS065001	BB052309PG	–	VQ450MC1005
230 Vac	2	30	DIN plug	IP65	61	40	MS065001	BB052309DIN	–	VQ450BB1005M*

# Dual Gas Valves

1



HFVR

**Fine particle filter, for mounting on inlet side (to be ordered separately)**

Filter size 50 micron. Pack size 10pcs.	HFVR050
Filter size 150 micron. Pack size 10pcs.	HFVR150



KTCOMB

**Flange kits without screen, for mounting on outlet side (to be ordered separately)**

Flange kit for VQ420/25M. Contains 2x Rp 1/2"	KTCOMB15
Flange kit for VQ420/25M. Contains 2x Rp 3/4"	KTCOMB20
Flange kit for VQ420/25M. Contains 2x Rp 1"	KTCOMB25
Flange kit for VQ440/50M. Contains 2x Rp 1 1/4"	KTCOMB32
Flange kit for VQ440/50M. Contains 2x Rp 1 1/2"	KTCOMB40
Flange kit for VQ440/50M. Contains 2x Rp 2"	KTCOMB50

**Flange kits with screen, for mounting on inlet side (to be ordered separately)**

Flange kit for VQ420/25M. Contains 2x Rp 1/2"	KTCOMS15
Flange kit for VQ420/25M. Contains 2x Rp 3/4"	KTCOMS20
Flange kit for VQ420/25M. Contains 2x Rp 1"	KTCOMS25
Flange kit for VQ440/50M. Contains 2x Rp 1 1/4"	KTCOMS32
Flange kit for VQ440/50M. Contains 2x Rp 1 1/2"	KTCOMS40
Flange kit for VQ440/50M. Contains 2x Rp 2"	KTCOMS50

**Side valves: By-Pass Valves (to be ordered separately)**

By-pass valves	_VB420
----------------	--------

**Side valves: Pilot Valves (to be ordered separately)**

Pilot valves	_VP420
--------------	--------

**Side valves: Vent Valves, normally open (to be ordered separately)**

Vent valves	_VV420
-------------	--------

**Gas Pressure Switches (to be ordered separately)**

Standard gas pressure switches for direct mount	_C6097A2x00
Slim size gas pressure switches for direct mount	_C60VR40

**DIN connector (to be ordered separately)**

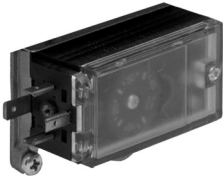
Standard DIN connector, colour black. For DIN/IP65 models only	C0020012
--	----------

**Replacement parts**

Replacement retarder for VE4xxxC-series DN10..25 and VQ4xxMC-series DN20-DN25	KTGRFR01
Replacement retarder for VE4xxxC-series DN32..50 and VQ4xxMC-series DN40-DN40	KTGRFR02



C6097A2200



C60VR40



C0020012

# Dual Gas Valves

## Side valves for VQ-Modular



VB420



Class "A" add-on side valves, for use with VQ-Modular dual valves, 3/4" size.

- VB420-series: internal by-pass of the second main valve, to provide two-stage control.
- VP420-series: integrated pilot valve with external Rp 3/4" outlet.
- VV420-series: integrated normally open vent valve to depressurize space between the two main valves during stand-by. Models for left or right side mount.

Gas valve type	Add-on safety shutoff valve, uses 4 screws for fixation and a gasket for sealing.
Media	Natural gas, butane or propane.
Materials	<ul style="list-style-type: none"> <li>• Valve body: aluminium die cast body.</li> <li>• Closing spring: AISI 302 steel.</li> <li>• Valve plunger: Chrome plated Fe 360B steel sliding on anti-friction bearing.</li> <li>• Seals and gaskets: Hydrocarbon resistant NBR rubber type.</li> </ul>
Approvals	<p><b>Only</b> approved in combination with the VQ-Modular series dual valves.</p> <ul style="list-style-type: none"> <li>• CE (EN161), AGA</li> </ul>
Note	<p>The VB-VP-VV models side valves are designed for:</p> <ul style="list-style-type: none"> <li>• a maximum operating frequency of one cycle per minute.</li> <li>• ca. 500k cycles of operation.</li> </ul>
Valve size	3/4 inch
Max. operating pressure	360 mbar
Ambient temperature	-15 ... 60 °C
Maximum closing time	1 s
Maximum flow	14.8 m <sup>3</sup> /h
Additional description	<ul style="list-style-type: none"> <li>• The valve solenoids are suitable for permanent energizing, such as applications in continuous operation.</li> </ul>

### Internal by-pass valve, fast opening and with flow rate adjuster.

For mounting on either side of the valve body.

Supply voltage	Maximum opening time s	Electrical connection	Protection class	Power consumption W	Spare coil V1	Type
115 Vac	1	screw terminals	IP54	26	BB151107PG	<b>VB420B1005</b>
230 Vac	1	screw terminals	IP54	20	BB152305PG	<b>VB420B1013</b>
115 Vac	1	DIN plug	IP65	26	BB151107DIN	<b>VB420B1021</b>
230 Vac	1	DIN plug	IP65	20	BB152305DIN	<b>VB420B1039</b>

### Internal by-pass valve, with adjustable slow opening, step-open and flow rate adjuster.

For mounting on either side of the valve body.

Supply voltage	Maximum opening time s	Electrical connection	Protection class	Power consumption W	Spare coil V1	Type
115 Vac	30	screw terminals	IP54	26	BB151107PG	<b>VB420C1006</b>
230 Vac	30	screw terminals	IP54	20	BB152305PG	<b>VB420C1014</b>
115 Vac	30	DIN plug	IP65	26	BB151107DIN	<b>VB420C1022</b>
230 Vac	30	DIN plug	IP65	20	BB152305DIN	<b>VB420C1030</b>

# Dual Gas Valves

1



VP420

**Pilot valve, fast opening and with flow rate adjuster. With Rp 3/4" internal pipe thread. For mounting on either side of the valve body.**

Supply voltage	Maximum opening time s	Electrical connection	Protection class	Power consumption W	Spare coil V1	Type
115 Vac	1	screw terminals	IP54	26	BB151107PG	<b>VP420B1003</b>
230 Vac	1	screw terminals	IP54	20	BB152305PG	<b>VP420B1011</b>
115 Vac	1	DIN plug	IP65	26	BB151107DIN	<b>VP420B1029</b>
230 Vac	1	DIN plug	IP65	20	BB152305DIN	<b>VP420B1037</b>



VV420-RIGHT

**Pilot valve, with adjustable slow opening, step-open and flow rate adjuster. With Rp 3/4" internal pipe thread. For mounting on either side of the valve body.**

Supply voltage	Maximum opening time s	Electrical connection	Protection class	Power consumption W	Spare coil V1	Type
115 Vac	30	screw terminals	IP54	26	BB151107PG	<b>VP420C1004</b>
230 Vac	30	screw terminals	IP54	20	BB152305PG	<b>VP420C1012</b>
115 Vac	30	DIN plug	IP65	26	BB151107DIN	<b>VP420C1020</b>
230 Vac	30	DIN plug	IP65	20	BB152305DIN	<b>VP420C1038</b>



VV420-LEFT

**Normally open vent valve series. With Rp 3/4" internal pipe thread, for mounting on the right side of the valve body.**

Supply voltage	Maximum opening time s	Electrical connection	Protection class	Power consumption W	Spare coil V1	Type
115 Vac	1	screw terminals	IP54	26	BB151107DIN	<b>VV420A1002</b>
230 Vac	1	screw terminals	IP54	20	BB152310DIN	<b>VV420A1010</b>
115 Vac	1	DIN plug	IP65	26	BB151107DIN	<b>VV420A1028</b>
230 Vac	1	DIN plug	IP65	20	BB152310DIN	<b>VV420A1036</b>

**Normally open vent valve series. With Rp 3/4" internal pipe thread, for mounting on the left side of the valve body.**

Supply voltage	Maximum opening time s	Electrical connection	Protection class	Power consumption W	Spare coil V1	Type
115 Vac	1	screw terminals	IP54	26	BB151107DIN	<b>VV420A1044</b>
230 Vac	1	screw terminals	IP54	20	BB152310DIN	<b>VV420A1051</b>
115 Vac	1	DIN plug	IP65	26	BB151107DIN	<b>VV420A1069</b>
230 Vac	1	DIN plug	IP65	20	BB152310DIN	<b>VV420A1077</b>



CO020012

**DIN connector (to be ordered separately)**

Standard DIN connector, colour black.

CO020012





































# Burner Controls

## Burner Controls EC/RM7800-series

The EC/RM7800 series are microprocessor-based industrial burner controls for automatically fired gas, oil or combination fuel single burner applications. For all type of burners with unlimited capacity.



7800-SERIES



### Approvals

- CE approved according EN298 for **continuous** operation (when used with correct flame amplifier and flame sensor).
- SIL-3 Capable certified
- APAVE accepted (CE approved models)
- CSA/UL approved (120Vac models only)

### Protection class

- Europe: IP00 (cabinet mount only)
- Americas: NEMA 1 (cabinet or wall mount)

### Ambient temperature

-40 ... 60 °C

### Maximum humidity

85 %rh

### Note

About Flame Failure Response Times (FFRT):

- European 7800-series burner controllers (EU): 1.0 or 2.0s (depends on flame amplifier).
- American 7800-series burner controllers (US): 0.8 or 3.0s (depends on flame amplifier).

### Flame detector

Depends on plug-in amplifier

### Additional description

- Modular design with plug-in modules. Selectable pre-purge time by ST7800A1xxx/U module selection.
- Accepts all existing Honeywell optical flame detectors and flame rods.
- All information regarding the burner control (6 last lockout conditions, flame signal, hours of operation ...) are available on the keyboard display module or through communication.

### European models 120Vac (RM78xx) (Operation: Cont.; Flame failure response time: 1,0/2,0s)

Control model	Outputs	Pilot	Prepurge timer	Pilot ignition time	Main ignition time	Post purge time	Number of ignition attempts	Valve proofing system	Type
Full	HF/LF/Modulate	Selectable	•	3/5s	3/5s	2s	1	–	RM7850A1001/U
Full	HF/LF/Modulate	Selectable	•	3/5s	3/5s	15s	1	–	RM7850A1019/U
Primary	on/off	Intermittent	–	5/10s	–	–	selectable	–	RM7890B1055/U

### European models 230Vac (EC78xx) (Operation: Cont.; Flame failure response time: 1,0/2,0s)

Control model	Outputs	Pilot	Prepurge timer	Pilot ignition time	Main ignition time	Post purge time	Number of ignition attempts	Valve proofing system	Type
Atmospheric	LF/Modulate	Selectable	•	5/10s	5/10s	–	1	–	EC7820A1026/U
Full	HF/LF/Modulate	Selectable	•	3/5s	3/5s	2s	1	–	EC7850A1072/U
Full	HF/LF/Modulate	Selectable	•	3/5s	3/5s	30s	1	–	EC7850A1080/U
Full	HF/LF/Modulate	Selectable	•	3/5s	3/5s	15s	1	–	EC7850A1122/U
Primary	on/off	Intermittent	–	5/10s	–	–	selectable	–	EC7890B1028/U

# Burner Controls

1

## American models 120Vac (RM78xx)

(Main ignition time: –; Number of ignition attempts: –; Flame failure response time: 0,8/3,0s)

Control model	Outputs	Operation	Pilot	Prepurge timer	Pilot ignition time	Post purge time	Valve proofing system	Comment	Type
Flame switch	2xSPDT	Cont.	–	–	–	–	–		RM7823A1016/U
Full	HF/LF/Modulate	Cont.	Interrupted	•	4/10s	15s	–		RM7840E1016/U
Atmosferic	LF/Modulate	Cont.	Interrupted	•	4/10s	15s	–		RM7840G1014/U
Full	HF/LF/Modulate	Cont.	Interrupted	•	4/10s	15s	–		RM7840L1018/U
Full	HF/LF/Modulate	Cont.	Selectable	•	4/10s	15s	–		RM7840L1026/U
Full	HF/LF/Modulate	Cont.	Interrupted	•	4/10s	15s	Integrated	Uses S7800A1142/U display for programming	RM7840L1075/U
Atmosferic	on/off	Cont.	Interrupted	–	4/10s	15s	–		RM7840M1017/U
Primary	–	Intermit.	Intermittent	–	4/10s	–	–	No shutter check	RM7890A1015/U
Primary	–	Cont.	Intermittent	–	4/10s	–	–		RM7890B1014/U
Primary	–	Cont.	Intermittent	–	–	–	–	Fixed 4s safety time.	RM7890B1030/U

## American models 230Vac (EC78xx)

(Main ignition time: –; Number of ignition attempts: –; Flame failure response time: 0,8/3,0s)

Control model	Outputs	Operation	Pilot	Prepurge timer	Pilot ignition time	Post purge time	Valve proofing system	Comment	Type
Flame switch	2xSPDT	Cont.	–	–	–	–	–		EC7823A1004/U
Primary	–	Intermit.	Intermittent	–	4/10s	–	–	No shutter check	EC7890A1011/U

## American models 24Vdc (RM7824)

(Main ignition time: –; Number of ignition attempts: –; Flame failure response time: 0,8/3,0s)

Control model	Outputs	Operation	Pilot	Prepurge timer	Pilot ignition time	Post purge time	Valve proofing system	Comment	Type
Primary	–	Cont.	–	–	4/10s	–	–	C7024E/F UV detector only	RM7824A1006/U

### Flame amplifiers



R78XX

Used with RM7824A 24Vdc model only. For UV sensor C7024E/F. Self-Check. Not CE approved. FFRT: 3.0s	R7824C1002/U
For flame rod (cable<5m). FFRT: EU=1.0s / US=0.8s	R7847A1025/U
For flame rod (cable<5m). FFRT: EU=2.0s / US=3.0s	R7847A1033/U
For flame rod (cable>5m) and UV sensor C7012A/C/G. FFRT: EU=1.0s / US=0.8s	R7847A1074/U
For flame rod (cable>5m) and UV sensor C7012A/C/G. FFRT: EU=2.0s / US=3.0s	R7847A1082/U
For flame rod (cable<5m). Ampli-Check. FFRT: EU=1.0s / US=0.8s	R7847B1023/U
For flame rod (cable<5m). Ampli-Check. FFRT: EU=2.0s / US=3.0s	R7847B1031/U
For flame rod (cable>5m) and UV sensor C7012A/C/G. Ampli-Check. FFRT: EU=1.0s / US=0.8s	R7847B1064/U
For flame rod (cable>5m) and UV sensor C7012A/C/G. Ampli-Check. FFRT: EU=2.0s / US=3.0s	R7847B1072/U
For C7012E/F UV sensor. Shutter-Check. Not CE approved. FFRT: EU=2.0s / US=3.0s	R7847C1005/U
For UV sensors C7027/35/44. FFRT: EU=1.0s / US=0.8s	R7849A1015/U
For UV sensors C7027/35/44. FFRT: EU=2.0s / US=3.0s	R7849A1023/U
For UV sensors C7027/35/44. Ampli-Check. FFRT: EU=1.0s / US=0.8s	R7849B1013/U
For UV sensors C7027/35/44. Ampli-Check. FFRT: EU=2.0s / US=3.0s	R7849B1021/U

# Burner Controls

For UV sensors C7927 and visible light C7962. Ampli-Check. Not CE approved. FFRT: EU=2.0s / US=3.0s	R7851B1000/U
For UV sensors C7961E/F. Shutter-Check. Not CE approved. FFRT: EU=2.0s / US=3.0s	R7851C1008/U
For IR sensors C7915. Ampli-Check. Not CE approved. FFRT: EU=2.0s / US=3.0s	R7852B1009/U
For UV sensors C7061A/F. Shutter-Check. FFRT: EU=2.0s / US=3.0s	R7861A1026/U
For UV sensors C7061A/F. Shutter-Check. FFRT: EU=1.0s / US=0.8s	R7861A1034/U
For UV sensors C7076A/D/F. Shutter-Check. FFRT: EU=2.0s / US=3.0s	R7886A1001/U

## Purge timers



ST7800

Prepurge time = 2s.	ST7800A1005/U
Prepurge time = 7s.	ST7800A1013/U
Prepurge time = 10s.	ST7800A1021/U
Prepurge time = 30s.	ST7800A1039/U
Prepurge time = 40s.	ST7800A1047/U
Prepurge time = 60s.	ST7800A1054/U
Prepurge time = 90s.	ST7800A1062/U
Prepurge time = 2.5min.	ST7800A1070/U
Prepurge time = 4.0min.	ST7800A1088/U
Prepurge time = 6.0min.	ST7800A1096/U
Prepurge time = 9.0min.	ST7800A1104/U
Prepurge time = 12.0min.	ST7800A1112/U
Prepurge time = 15.0min.	ST7800A1120/U
Prepurge time = 22.0min.	ST7800A1138/U
Prepurge time = 30.0min.	ST7800A1146/U

## Wiring bases



Q7800

Mounting subbase for 7800-series. Panel mount.	Q7800A1005/U
Mounting subbase for 7800-series. Wall mount.	Q7800B1003/U

## Keyboard display modules



S7800

Language: English. With integrated Modbus communication option.	S7800A1001/U
Language: French	S7800A1035/U
Language: German	S7800A1043/U
Language: Italian	S7800A1050/U
Language: Spanish	S7800A1068/U
Language: Portuguese	S7800A1126/U
Language: English. Enhanced model, needed to program Enhanced 7800-series models (with VPS).	S7800A1142/U

## Remote Communication Modules



S7810

Data Controlbus Module for communication or for remote S7800 mounting.	S7810A1009/U
MODBUS communication card. For US models only, not CE approved (includes remote reset over Modbus).	S7810M1003/U
MODBUS communication card. CE approved (no remote reset over Modbus).	S7810M1029/U
Remote Reset Module.	S7820A1007/U

## Parts

5-wire connector for S7800/10/20	203541/U
Remote mounting bracket for S7800	203765/U
Display extension cable assembly. Cable length 1.5 m	221818A/U
Display extension cable assembly. Cable length ca. 3 m. Note: assure no electrical noise is present to avoid connection problems, due to extra long cable.	221818C/U
Nema 4 cover assembly for remote mounting of S7800 display.	50023821-001/U
Nema 4 cover assembly for remote mounting of S7800 display. Incl. remote reset button and wiring.	50023821-002/U

## Burner Controls DBC2000-series



DBC2000



The Honeywell DBC2000 is a microprocessor-based integrated burner controller for automatically fired gas, oil or combination fuel industrial single burner power burner applications. The DBC2000 system consists of the relay module and wiring subbase. The Standard Model provides the minimum requirements to control an industrial burner system; the Enhanced Model includes an integrated Valve Proofing System; the Ultimate model includes bus communication on top of this. For all type of burners with unlimited capacity in intermittent operation. An integrated timer assures an automated recycle sequence after ca 24h uninterrupted heat demand.

Approvals	<ul style="list-style-type: none"> <li>• CE approved according EN298 for <b>intermittent</b> operation (when used with correct flame sensor).</li> <li>• AGA certified</li> </ul>
Protection class	IP40
Ambient temperature	-10 ... 60 °C
Maximum humidity	90 %rh
Note	Extra features: <ul style="list-style-type: none"> <li>• Integrated 24h auto recycle timer</li> <li>• Selectable Pilot or Direct Main Burner Ignition operation.</li> <li>• Selectable post-purge (15s) or no-post-purge (0s) operation.</li> </ul>
Control model	Full
Outputs	HF/LF/Modulate
Operation	24h auto-recycle
Pilot	Selectable intermittent / interrupted
Pilot ignition time	3s (Pilot only: 5s)
Main ignition time	3s
Post purge time	15/0s
Number of ignition attempts	1
Flame failure response time	<1s
Flame detector	UV/FR
Additional description	DBC2000 models have two integrated flame amplifiers: UV Power Tube (UV) and Rectification (FR), that are selectable by a jumper at the back of the unit. Default is FR (jumper present). Applicable flame sensors: <ul style="list-style-type: none"> <li>• Flame rod (FR)</li> <li>• UV sensor family C7027/35/44 (UV)</li> <li>• UV sensor family C7012A/G (FR)</li> <li>• IR sensor family IRD1020 (FR)</li> </ul>



# Burner Controls

## 230Vac versions

Prepurge time	Valve proofing system	Comment	Type
35s	–	Standard Model	<b>DBC2000E1018</b>
0s	–	Standard Model	<b>DBC2000E1026</b>
60s	–	Standard Model	<b>DBC2000E1034</b>
35s	Integrated	Enhanced Model	<b>DBC2000E2019</b>

## 115Vac versions

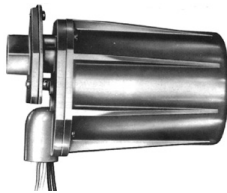
Prepurge time	Valve proofing system	Comment	Type
35s	–	Standard Model	<b>DBC2000E1000</b>
35s	Integrated	Enhanced Model	<b>DBC2000E2001</b>

## Accessories for use with DBC2000 (see dedicated chapter for details)

Cable (ca. 250mm) with jack plug for remote 0..15 micro-ampere flame signal reading. For use with jack plug socket on the front of DBC2000 and R4343 or on plug-in amplifier of R4348.	117053/U
Industrial flame rod.	_C7008
PurplePeeper standard UV detector and IP67 protection.	_C7012A/G
MiniPeeper standard UV detector and IP54 protection.	_C7027
MiniPeeper with field replaceable tube and IP65 protection.	_C7035



C7008



C7012



C7027



C7035

# Flame Sensors

1

## UV flame sensors C7027/35/44 ("MiniPeeper")



C7027A



Compact analogue UV flame sensor to detect ultraviolet radiations emitted by combustion flames. Used with Honeywell burner controls to provide flame supervision for commercial and industrial burner applications.

### Approvals

- CE approved according to EN298, only in combination with matching Honeywell flame amplifiers and burner controls.
- UL/CSA approved for USA, only in combination with matching Honeywell flame amplifiers and burner controls.
- AGA approved for Australia, only in combination with matching Honeywell flame amplifiers and burner controls.
- Only for intermittent operation. The burner has to recycle at least once per 24 hours.

### Features

- Rugged, compact, with encapsulated sensing tube for maximum protection.
- Quick and easy installation on standard sight pipe.
- Detects UV radiation in the 310nm range of the spectrum.

### Additional description

- Models marked "DIN Approved Model" have no CSA/UL marking on the product label and have an insulated cable instead of wires.
- Maximum **recommended** cable length: ca. 50m

### C7027 with clamp type connector

Mechanical connection	Cable length m	Ambient temperature °C	Protection class	Comment	Type
1/2"	2.4	-18 ... 102	IP54		C7027A1023/U
1/2"	2.4	-40 ... 102	IP54		C7027A1031/U
1/2"	2.4	-18 ... 102	IP54	"DIN/BG" model	C7027A1056/U

### C7027 with 1/2" NPT threaded spud connector



C7027A1064

Mechanical connection	Cable length m	Ambient temperature °C	Protection class	Comment	Type
1/2"	2.4	-18 ... 102	IP54		C7027A1049/U
1/2"	7.3	-40 ... 102	IP54		C7027A1064/U

### C7035 with field replaceable UV tube



C7035A1049

Mechanical connection	Cable length m	Ambient temperature °C	Protection class	Comment	Type
1"	1.8	-18 ... 121	IP67		C7035A1023/U
1"	1.8	-40 ... 121	IP67		C7035A1031/U
1" BSP	1.8	-18 ... 121	IP67	"DIN/BG" model	C7035A1049/U
1"	1.8	-40 ... 121	IP67		C7035A1056/U
1" BSP	1.8	-40 ... 121	IP67	"DIN/BG" model	C7035A1064/U
1"	1.8	-18 ... 121	IP67	High temp. wires (315C)	C7035A1080/U



C7927A

**C7927 solid state UV sensor (for EC/RM78xx only)**

Mechanical connection	Cable length m	Ambient temperature °C	Protection class	Comment	Type
1/2"	1.8	-18 ... 102	IP54	Not CE (EN298) approved.	<b>C7927A1016/U</b>

**Used with controllers**

Industrial 115Vac flame switch (SPST)with integrated UV flame amplifier.	<b>BC1000A0110U</b>
Industrial 230Vac flame switch (SPST)with integrated UV flame amplifier.	<b>BC1000A0220U</b>
Industrial 115Vac flame switch (SPDT)with integrated UV flame amplifier.	<b>BC1000B2001</b>
Industrial 230Vac flame switch (SPDT)with integrated UV flame amplifier.	<b>BC1000B2019</b>
Industrial 115Vac burner controller with integrated FR/UV flame amplifier.	<b>DBC2000E1000</b>
Industrial 230Vac burner controller with integrated FR/UV flame amplifier.	<b>DBC2000E1018</b>
Industrial 115Vac burner controller with integrated FR/UV flame amplifier and VPS.	<b>DBC2000E2001</b>
Industrial 230Vac burner controller with integrated FR/UV flame amplifier and VPS.	<b>DBC2000E2019</b>
Industrial 115Vac burner controller with plug-in R7849-series UV flame amplifier.	<b>_RM78xx</b>
Industrial 230Vac burner controller with plug-in R7849-series UV flame amplifier.	<b>_EC78xx</b>
Industrial 115Vac flame switch with integrated UV flame amplifier.	<b>R4343E1006</b>
Industrial 230Vac flame switch with integrated UV flame amplifier.	<b>R4343E1014</b>
Industrial 115/230Vac flame switch with integrated UV flame amplifier.	<b>R4343E1048-ST005</b>
SLATE <sup>(TM)</sup> burner management system.	<b>R8001B2001/U</b>

**Used with flame Amplifiers (EC/RM78xx and R4348 only)**

Amplifier for the Honeywell R4348 series for use with C7027/35/44 sensors	<b>R7323A1020</b>
Amplifier for the Honeywell 7800 series burner control for use with C7027/35/44 sensors	<b>_R7849Axx</b>
Ampli-check amplifier of the Honeywell 7800 series burner control for use with C7027/35/44 UV sensors	<b>_R7849Bxx</b>
Ampli-check amplifier of the Honeywell 7800 series burner control for use with C7927 solid state UV sensor	<b>_R7851Bxx</b>
Ampli-check amplifier of the Honeywell SLATE <sup>(TM)</sup> burner management system for use with C7027/35/44 UV sensor	<b>R8001F1091/U</b>
Ampli-check amplifier of the Honeywell SLATE <sup>(TM)</sup> burner management system for use with C7927 solid state UV sensor	<b>R8001S1071/U</b>

**Replacement tube for C7035**

Ultraviolet sensing tube (-40° to 121°C) for C7035/C7061 flame scanners	<b>129464N/U</b>
Ultraviolet sensing tube (-18° to 121°C) for C7035/C7061 flame scanners	<b>129464M/U</b>

# Flame Sensors

1

## UV flame sensors C7012A/C/E/F/G



C7012A



Solid-state electronic UV flame sensor to detect ultraviolet radiation emitted by the combustion of most carbon-containing fuels such as natural gas, LP gases, and oil. Used with Honeywell burner controls to provide flame supervision in continuous operation for industrial burner applications.

### Approvals

- CE approved according to EN298 only in combination with matching Honeywell flame amplifiers and burner controls.
- C7012E/F models are approved for use in continuous operation, by using dynamic self-check.
- C7012C/F models are UL listed for use in explosion hazardous locations; Class 1, groups C and D; and Class 2, groups E, F, and G.

### Cable length

2.4 m

### Additional description

- Two flame detectors can be wired in parallel to reduce nuisance shutdowns in difficult flame sighting applications.
- Quick and easy installation on standard 3/4" NPT sight pipe (Ex-proof models 1" NPT).
- The "DIN" models have an additional grounding wire (green/yellow)

### Standard models for intermittent operation

Mechanical connection	Ambient temperature °C	Protection class	Supply voltage	Comment	Note	Type
3/4" NPT	-4 ... 79	IP66	110..120 Vac			<b>C7012A1145/U</b>
3/4" NPT	-4 ... 79	IP66	240 Vac			<b>C7012A1194/U</b>
3/4" NPT	-4 ... 79	IP66	220 Vac	"DIN" version		<b>C7012G1019/U</b>

### Standard models for continuous operation (with mechanical shutter)

Mechanical connection	Ambient temperature °C	Protection class	Supply voltage	Comment	Note	Type
3/4" NPT	-29 ... 79	IP66	110..120 Vac	Shutter coil voltage: 120V only		<b>C7012E1104/U</b>
1" NPT	-40 ... 79	IP66	110..120 Vac	Shutter coil voltage: 120V only		<b>C7012E1120/U</b>
3/4" NPT	-29 ... 79	IP66	240 Vac	Shutter coil voltage: 120V only		<b>C7012E1153/U</b>
3/4" NPT	-29 ... 79	IP66	220 Vac	"DIN" version Shutter coil voltage: 120V only		<b>C7012E1187/U</b>
3/4" NPT	-29 ... 79	IP66	110 Vac	"DIN" version Shutter coil voltage: 120V only		<b>C7012E1195/U</b>

### UL listed explosion proof models for intermittent operation



C7012F

Mechanical connection	Ambient temperature °C	Protection class	Supply voltage	Comment	Note	Type
1" NPT	-29 ... 79	NEMA 7	110..120 Vac	Ex approved in USA only		<b>C7012C1042/U</b>

### UL listed explosion proof models for continuous operation (with mechanical shutter)

Mechanical connection	Ambient temperature °C	Protection class	Supply voltage	Comment	Note	Type
1" NPT	-29 ... 79	NEMA 7	110..120 Vac	Ex approved in USA only Shutter coil voltage: 120V only		<b>C7012F1052/U</b>

# Flame Sensors

## Used with controllers

Industrial burner controller used with plug-in flame amplifier R78xx-series.	_EC/RM78
Industrial flame switch (115Vac) with integrated rectification flame amplifier.	R4343D1009
Industrial flame switch (230Vac) with integrated rectification flame amplifier.	R4343D1017

## Standard amplifier for the Honeywell EC/RM78xx series for use with C7012A/C/G sensors.

FFRT = 1.0 or 0.8 sec	R7847A1074/U
FFRT = 2.0 or 3.0 sec	R7847A1082/U

## Ampli-check amplifier for the Honeywell EC/RM78xx series for use with C7012A/C/G sensors.

FFRT = 1.0 or 0.8 sec	R7847B1064/U
FFRT = 2.0 or 3.0 sec	R7847B1072/U

## Self-check amplifier for the Honeywell EC/RM78xx series for use with C7012E/F sensors.

FFRT = 2.0 or 3.0 sec. Note: not CE approved (GAD) for use in Europe. When used with EC78xx controls (230Vac), take precautions to reduce line voltage shutter voltage to prevent damage to the connected C7012E/F !!	R7847C1005/U
---	--------------

## Accessories

Swivel mount for adjustable positioning of the UV sensor	118367A/U
Mounting flange with 1" NPT internal thread for mounting on 1" sight pipe (to replace standard 3/4" NPT flange), for C7012A/E/G only	124198/U
Quartz focussing lens	124204/U

## Replacement parts

Ultraviolet sensing tube for C7012 sensor	113228/U
Coil and shutter assembly for C7012E/F models only	190971B/U

# Flame Sensors

## UV flame sensors C7061A/F

Solid-state electronic UV flame sensor to detect ultraviolet radiation emitted by the combustion of most carbon-containing fuels such as natural gas, LP gases, and oil. Used with Honeywell burner controls to provide flame supervision in continuous operation for industrial burner applications.



C7061A



### Approvals

- CE approved according to EN298 only in combination with matching Honeywell flame amplifiers and burner controls.
- C7061-series models are approved for use in continuous operation, by using dynamic self-check.
- C7061F1 models are ATEX approved for use in explosion hazardous locations; II G Ex d IIC T6, zone 1&2.
- C7061F2 models are UL listed for use in explosion hazardous locations; Class 1, groups C and D; and Class 2, groups E, F, and G.

Ambient temperature

-40 ... 80 °C

### Additional description

- Two flame detectors can be wired in parallel to reduce nuisance shutdowns in difficult flame sighting applications.
- Quick and easy installation on standard 3/4" NPT sight pipe (Ex-proof models: 1" NPT).
- Uses the same UV sensing ("Power") tube as used with C7027/35/44 series "MiniPeeper": no external power supply.
- The "DIN" models have an additional grounding wire (green/yellow)

### European models for continuous operation, with mechanical shutter

Mechanical connection	Cable length m	Protection class	Comment	Note	Type
3/4" NPT	0	IP66		Dual shutter coil voltage: 120/230V	<b>C7061A1020/U</b>
3/4" NPT	0	IP66	With focussing lens	Dual shutter coil voltage: 120/230V	<b>C7061A1079/U</b>



C7061F1003

### ATEX certified Ex-proof European models for continuous operation, with mechanical shutter (Ex: CENELEC II G Ex d IIC T6; zone 1&2)

Mechanical connection	Cable length m	Protection class	Comment	Note	Type
1" NPT	0	IP67	Incl. cable gland	Dual shutter coil voltage: 120/230V	<b>C7061F1003</b>

### American models for continuous operation, with mechanical shutter



C7061A

Mechanical connection	Cable length m	Protection class	Comment	Note	Type
3/4" NPT	2.4	IP66		Single shutter coil voltage: 120V only	<b>C7061A1012/U</b>
3/4" NPT	2.4	IP66	With focussing lens	Single shutter coil voltage: 120V only	<b>C7061A1061/U</b>

### UL listed Ex-proof American models for continuous operation, with mechanical shutter (Ex: Class I, gr.C/D and Class II, gr.E/F/G)



C7061F2001

Mechanical connection	Cable length m	Protection class	Comment	Note	Type
1" NPT	2.4	NEMA 7	Ex-proof in Americas only	Single shutter coil voltage: 120V only	<b>C7061F2001/U</b>

# Flame Sensors

**KOSHA approved Ex-proof Korean models for continuous operation, with mechanical shutter (Ex: Ex d IIC T6 IP65)**

Mechanical connection	Cable length m	Protection class	Comment	Note	Type
1" NPT	0	IP65	Ex-proof in Korea only	Dual shutter coil voltage: 120/230V	<b>C7061F1011</b>

**Used with controllers**

Industrial burner controller used with plug-in flame amplifier. **\_EC/RM78**

SLATE<sup>(TM)</sup> burner management system. **R8001B2001/U**

**Self-check amplifier for the Honeywell EC/RM78xx series.**

FFRT = 2.0 or 3.0 sec. Note: When used with C7061 models with 120V shutter voltage only and with EC78xx controls (230Vac), take precautions to reduce line voltage shutter voltage to prevent damage to the connected C7061 !! **R7861A1026/U**

FFRT = 1.0 or 0.8 sec. Note: When used with C7061 models with 120V shutter voltage only and with EC78xx controls (230Vac), take precautions to reduce line voltage shutter voltage to prevent damage to the connected C7061 !! **R7861A1034/U**

**Self-check amplifier for the Honeywell SLATE(TM) burner management system**

Self-check amplifier of the Honeywell SLATE<sup>(TM)</sup> burner management system for use with C7061-series UV sensor **R8001S1051/U**

**Accessories**

Gasket, silicone rubber. For installing viewing window or lens(3pcs required) **114465/U**

Swivel mount for adjustable positioning of the UV sensor **118367A/U**

Mounting flange for C7061A with 1" NPT internal thread for mounting on 1" sight pipe (to replace standard 3/4" NPT flange) **124198/U**

Quartz focussing lens **124204/U**

**Replacement parts**

Ultraviolet sensing tube for C7061 sensors, -40..102C **129464N/U**

Coil and shutter assembly **190971B/U**

# Flame Sensors

1

## UV flame sensors C7076



C7076A1007



UV flame sensor to detect ultraviolet radiation emitted by combustion flames. Used with Honeywell burner controls to provide flame supervision in continuous operation for industrial burner applications, that use solid fuel or heavy oil, dirty gas, hydrogen, sulphur, etc. as fuel.

### Approvals

- CE approved according to EN298 only in combination with matching Honeywell flame amplifiers and burner controls.
- Approved for use in continuous operation, by using dynamic self-check.

Mechanical connection	1" NPT
Ambient temperature	-40 ... 70 °C
Protection class	IP65
Note	Shutter coil voltage: 120V only
Additional description	<ul style="list-style-type: none"><li>• Integrated air purge connection.</li><li>• Quick and easy installation on standard 1" NPT sight pipe.</li></ul>

### Standard enclosure (IP65)

Supply voltage	Comment	Type
110..120 Vac		C7076A1007/U
220..240 Vac		C7076A1031/U



# Flame Sensors



U2S-PF

**Functional replacements of C7076F models for use in hazardous areas (see also section "Industrial Flame Monitoring").**

Triple flame sensor: UV-tube, UV-ss and IR. 15FT cable (5m). Approvals: CE, ATEX, SIL 3	U2-1010S-PF
Triple flame sensor: UV-tube, UV-ss and IR. 50FT cable (15m). Approvals: CE, ATEX, SIL 3	U2-1010S-PF-050
Triple flame sensor: UV-tube, UV-ss and IR. 100FT cable (30m). Approvals: CE, ATEX, SIL 3	U2-1010S-PF-100
Single flame sensor: IR only. 15FT cable (5m). Approvals: CE, ATEX, SIL 3	U2-1012S-PF
Single flame sensor: UV-tube only. 15FT cable (5m). Approvals: CE, ATEX, SIL 3	U2-1016S-PF
Dual flame sensor: UV-tube and IR. 15FT cable (5m). Approvals: CE, ATEX, SIL 3	U2-1018S-PF

**Used with controllers**

Industrial 120Vac burner controller. Use R7886 UV plug-in flame amplifier.	_RM78xx
Industrial 230Vac burner controller. Use R7886 UV plug-in flame amplifier.	_EC78xx

Amplifier of the Honeywell 7800 series burner control for use with C7076-series sensors	R7886A1001/U
---	--------------

**Replacement tube for C7076**

Ultraviolet sensing tube for C7076 sensor	191053/U
---	----------

**Replacement shutter assembly for C7076**

Replacement shutter and coil assembly for C7076, with black painted shutter	190971E/U
---	-----------

**Replacement internal chassis for C7076**

Replacement electronic chassis module, <b>excluding</b> sensing tube for C7076A/D models (120Vac)	191002B/U
Replacement electronic chassis module, <b>excluding</b> sensing tube for C7076A/D models (230Vac)	191002D/U
Replacement electronic chassis module, <b>excluding</b> sensing tube for C7076F models (120Vac)	191002BF
Replacement electronic chassis module, <b>excluding</b> sensing tube for C7076F models (230Vac)	191002DF

# Flame Switches

1

## Flame relays BC1000



BC1000



The BC1000A/B series is a flame switch for intermittent operation to indicate presence or absence of a flame and to be applied in commercial or industrial burner installations.

- The BC1000A is specially designed to be used as manual start/stop burner controller. For all type of burners with unlimited capacity.

Approvals	• CE approved according EN298 (for <b>intermittent</b> operation), AGA
Protection class	IP00
Ambient temperature	-20 ... 60 °C
Maximum humidity	90 %rh
Note	• The BC1000A1/B1 models will operate also with the "Satronic" IRD1020 range of infrared sensors. Note that this combination is NOT CE approved for use on installations that fall under the GAD (Gas Appliances Directive).
Additional description	<ul style="list-style-type: none"> <li>• BC1000A/B provides a Safe Start function which checks if a flame signal is present when applying power to the device.</li> <li>• BC1000A1/B1 models are for use with rectification type flame sensors, such as flame rods and C7012A/G UV sensors.</li> <li>• BC1000A2/B2 models are for use with Honeywell UV sensor models C7027, C7035 and C7044.</li> </ul>

### 230Vac versions

Outputs	Operation	Flame failure response time	Flame detector	Supply voltage	Comment	Type
1xSPST	Manual stop/start	2s	Rectification	220..240 Vac	Flame rod (or C7012A/G)	<b>BC1000A0220F</b>
1xSPST	Manual stop/start	2s	UV	220..240 Vac	C7027, C7035, C7044	<b>BC1000A0220U</b>
1xSPDT	Flame switch	<1s	Rectification	220..240 Vac	Flame rod (or C7012A/G)	<b>BC1000B1018</b>
1xSPDT	Flame switch	<1s	UV	220..240 Vac	C7027, C7035, C7044	<b>BC1000B2019</b>

### 115Vac versions

Outputs	Operation	Flame failure response time	Flame detector	Supply voltage	Comment	Type
1xSPST	Manual stop/start	2s	Rectification	110..120 Vac	Flame rod (or C7012A/G)	<b>BC1000A0110F</b>
1xSPST	Manual stop/start	2s	UV	110..120 Vac	C7027, C7035, C7044	<b>BC1000A0110U</b>
1xSPDT	Flame switch	<1s	Rectification	110..120 Vac	Flame rod (or C7012A/G)	<b>BC1000B1000</b>
1xSPDT	Flame switch	<1s	UV	110..120 Vac	C7027, C7035, C7044	<b>BC1000B2001</b>

### Accessories for use with BC1000A1/B1 (see dedicated chapter for details)

Industrial flame rod.	_C7008
PurplePeeper standard UV detector and IP67 protection.	_C7012A/G



C7008

### Accessories for BC1000A2/B2 (see dedicated chapter for details)

MiniPeeper standard UV detector and IP54 protection.	_C7027
MiniPeeper with field replaceable tube and IP65 protection.	_C7035



C7012A



IRD1020



C7027



C7035

# Flame Switches

## Flame relay R4343



R4343E1030



The R4343D/E series is a flame switch for intermittent operation to indicate presence or absence of a flame and to be applied in commercial or industrial burner installations. light.

- Flame current meter jack socket on the front permits monitoring of flame signal strength, by using any appropriate microampere meter (0-10uA minimum scale).
- Plug-in mounts onto a sub base (included) for surface mounting.

Providing an indication of absence or presence of a flame in intermittent industrial oil/gas burner applications by an open or closed relay contact.

Approvals	• CE approved according EN298 (for intermittent operation)
Protection class	IP40
Ambient temperature	-10 ... 60 °C
Maximum humidity	90 %rh
Note	The R4343D models will operate also with the "Satronic" IRD1020 range of infrared sensors. Note that this combination is NOT CE approved for use on installations that fall under the GAD (Gas Appliances Directive).
Outputs	1xDPDT
Operation	Intermit.
Additional description	<ul style="list-style-type: none"> <li>• R4343D models are for use with rectification type flame sensors, such as flame rods and C7012A/G UV sensors.</li> <li>• R4343E models are for use with Honeywell UV sensor models C7027, C7035 and C7044.</li> </ul>

### Ionisation flame detectors

Flame failure response time	Flame detector	Supply voltage	Type
<1s	Rectification	110..120 Vac	<b>R4343D1009</b>
<1s	Rectification	220..240 Vac	<b>R4343D1017</b>
<2s	Rectification	115/230 Vac	<b>R4343D1041-ST005</b>

### UV flame detectors

Flame failure response time	Flame detector	Supply voltage	Type
<1s	UV	110..120 Vac	<b>R4343E1006</b>
<1s	UV	220..240 Vac	<b>R4343E1014</b>
<2s	UV	115/230 Vac	<b>R4343E1048-ST005</b>

### Accessories (see dedicated chapter for details)

Cable (ca. 250mm) with jack plug for remote 0..15 micro-ampere flame signal reading. For use with jack plug socket on the front of DBC2000 and R4343 or on plug-in amplifier of R4348.	117053/U
Industrial flame rod.	_C7008
Standard Purplepeeper UV detector and IP65 protection.	_C7012A/G
MiniPeeper standard UV detector and IP54 protection.	_C7027
MiniPeeper with field replaceable tube and IP65 protection.	_C7035



C7008



C7012A



C7027



C7035

# Flame Switches

---

1



# Industrial Flame Monitoring

1

## Industrial flame monitoring - U2-101xS All-In-One Viewing head



U2S

The Honeywell U2-101xS series model all-in-one viewing head with integrated signal processor delivers flame discrimination in the toughest environments. With automatic setup and the ability to monitor UV and IR flame components simultaneously or separately, the U2-101xS all-in-one flame scanner offers improved burner up time and reliability. Industrial process burners, multiple burner system.

Touch screen user interface

A tempered and fully sealed glass touch wheel sensor: no mechanical moving buttons.

- Local display: LED display for flame signal monitoring onsite
- Configuration menu is locked to avoid accidental access automatically after a few minutes of inactivity. To unlock, make 1 full 360 turn with the finger around the touch screen window.



Power supply

24 Vdc; 2.6 VA



Protection class

- NEMA 4x, IP66
- Zone 2 Class 1 Div 2 Group A, B, C and D
- U2-101xS: II 3G Ex nA nC T5 Gc
- U2-101xS-PF: II 2G Ex d IIC T6 Gb / 2D Ex d tb IIIC T85 Db



Ambient temperature

-40 ... 70 °C

Maximum humidity

85 %rh



Approvals

- CE (EN298) for **continuous** operation (Europe).
- CSA and FM (US)
- IECEx and ATEX (explosion proof)
- NCC/Inmetro (Brazil)
- EAC (Russia)
- KTL (Korea)
- SIL 3 Capable



Housing (HxWxD)

117 mm; 117 mm; 155 mm

Weight

2.8 kg

Output signal

- 4-20 mA (or 0-20 mA) with scale multiplier for remote meter or DCS and local display.

Relay outputs

Wire flame and self-check relay contacts in serial to obtain fail-safe operation.

- Flame relay: SPST - Normally Open
- Self-check relay: SPST - Normally Open

End switch function/capacity

30 Vdc, 1 A (resistive)

Note

- For "PF" models it is highly recommended to use a pipe coupler (see R-518-xx accessories), for easy mounting on to a viewing pipe.
- Because Honeywell cable accessories are of USA origin, all cable lengths are measured in Ft (Feet, 1 Ft = 304.8mm)

Control model

Flame switch

Outputs

2xSPST

Flame failure response time

1/2/3s selectable

**Additional description**

- Sensor: UV Tube (UVTron), UV photo diode (UVss), IR sensor or a combination of these three sensors
- Response (peak): 210 nm (UVTron), 310 nm (UVss), 1400 nm (IR)
- Technology: Flicker (UVss and IR), Pulse Count (UVTron)
- 100% immunity for X-Ray and Gamma radiation
- Self-check (Electronic shutter): internal processor monitors tube health
- All-in-one flame scanner: no additional wiring cabinet needed
- Remote communication: Modbus RTU (2 wire RS485 compatible)
- 7 files for different configuration, that can be selected by applying or removing a voltage on the dedicated terminal (where FILE 0 is selected < 16Vdc and FILE X > 21Vdc) which this allows smooth file transition possible on mixed fuel burners. File 1..7 are selectable via the Modbus connection.

**U2-S cable connector models. For general use and Zone 2. Excluding cable, connector, PT adapter and air purge coupler.**

Product description	Comment	Flame detector	Type
Triple flame sensor.	3G Ex nA nC T5	UVTron+UVSS+IR	<b>U2-1010S</b>
Single flame sensor.	3G Ex nA nC T5	IR	<b>U2-1012S</b>
Single flame sensor.	3G Ex nA nC T5	UVTron	<b>U2-1016S</b>
Dual flame sensor.	3G Ex nA nC T5	UVTron+IR	<b>U2-1018S</b>

**U2-S models with factory mounted cable and 3/4" cable gland. For use in Zone 1. Excluding PT adapter and air purge coupler.**

Product description	Comment	Flame detector	Type
Triple sensor . Cable length 10 Ft (3 m).	Ex d IIC T6	UVTron+UVSS+IR	<b>U2-1010S-PF</b>
Triple sensor. Cable length 50 Ft (15 m).	Ex d IIC T6	UVTron+UVSS+IR	<b>U2-1010S-PF-050</b>
Triple sensor . Cable length 100 Ft (30 m).	Ex d IIC T6	UVTron+UVSS+IR	<b>U2-1010S-PF-100</b>
Single sensor. Cable length 10 Ft (3 m).	Ex d IIC T6	IR	<b>U2-1012S-PF</b>
Single sensor . Cable length 10 Ft (3 m).	Ex d IIC T6	UVTron	<b>U2-1016S-PF</b>
Dual sensor. Cable length 10 Ft (3 m).	Ex d IIC T6	UVTron+IR	<b>U2-1018S-PF</b>

**Parts and accessories - 12 conductor C22S ITC/CIC approved cable for U2-S, with factory mounted R-518-10 connector**

Cable length 50 Ft (15m )	<b>ASYU2S</b>
Cable length 100 Ft (30 m)	<b>ASYU2S-100</b>
Cable length 200 Ft (60 m)	<b>ASYU2S-200</b>
Cable length 50 Ft (90 m)	<b>ASYU2S-300</b>
12 Conductor cable with braided shield. Orderable in 1 Ft (30.48 cm) incrementals, minimum length is 15 Ft.	<b>C22S</b>

**Parts and accessories - cable connector for U2-S**

Quick disconnect 12-pins Turck connector for U2-S "non-PF" models.	<b>R-518-10</b>
--	-----------------



U2S-PF



U2S-ASYU2S



ASYU2S

# Industrial Flame Monitoring

1



ISO-UNIT



ISO-UNITSS

## Parts and accessories - pipe fitting accessories

1" NPTF sealing union with quartz window and 1/2" NPTF purge port	ISO-UNIT
1" NPTF stainless steel sealing union with quartz window and 1/2" NPTF purge port	ISO-UNITSS
1" NPTF sealing union with quartz window and 1/2" NPTF purge port. High pressure version with 1/2" thick high pressure quartz window	ISO-UNITHPGT
Swivel mount, 2" pipe slip to 1" NPT female connection. Anodized aluminium.	M-701-1
Swivel mount, 2" NPT female to 1" NPT female connection. Anodized aluminium.	M-701-2
Flanged swivel mount, 2" flanged to 1" NPTF	M-701-2-FLG
Swivel mount, 2" NPT female to 1" NPT female. Stainless steel construction	M-701-2-SS
Flanged swivel mount, 3-bolt, 4.5" flanged to 1" NPTF	M-701-3
Swivel mount, 3" NPTF to 1" NPTF connection	M-701-3P
Swivel mount, 2-bolt to 1" NPTF connection	M-701-4
Swivel mount bushing 1" x 1/2" NPT, 1/2" connection	M-701-5
1" NPT locking coupler with high temperature gasket	R-518-CL12-HTG
1" NPT aluminum locking quick disconnect/cam and groove coupler adapter with 1/2" NPT purge port. Used with U2 processor/viewing heads	R-518-CL12-PG
1/2" NPT locking coupler with high temperature gasket	R-518-CL13-HTG
1" NPT Ultem insulating locking coupler adapter. Used with U2 processor/viewing head	R-518-PT12
1" NPT Ultem locking coupler adapter with quartz lens	R-518-PT12L
1/2" NPT Ultem locking coupler adapter only	R-518-PT13
1/2" NPT Ultem locking coupler adapter with quartz lens	R-518-PT13L



M-701-2



M-701-2-FLG



M-701-2-SS



M-701-3



M-701-3P



M-701-4





R-518-CL12-HTG



R-518-CL12-PG



R-518-CL13-HTG



R-518-PT12



R-518-PT12L



R-518-PT13

**Parts and accessories - programming and monitoring tools**



FLAMETOOLS-HMI

Configuration colour touch screen display, with preinstalled Windows CE based configuration software and Modbus connection to connect 700xCSP, P222, P5xx and U2-S signal processors

FLAMETOOLS-HMI/U

**Parts and accessories - various parts**

Replacement O-ring for ISO-UNIT, ISO-UNITSS and ISO-UNITHPGT

ISO-OR

Replacement quartz window for ISO-Unit and ISO-UnitSS

ISO-QW

Replacement retainer ring for ISO-UNIT, ISO-UNITSS and ISO-UNITHPGT

ISO-RR

ISO-Union wrench set.

ISO-WRENCH

Orifice and retaining ring set. Used for all viewing heads

M-702-6

High temperature gasket for 1" locking coupler

PT-GA1

Quartz lens for 1" locking coupler

PT-QL1

Ultra violet light source for UV sensor testing.

UVSOURCE



M-702-6



UV-SOURCE

# Industrial Flame Monitoring

1

## Industrial flame monitoring - S700/S800 Viewing Heads



S700



S800



S700PF



700XXSP



P531



P532

The S700 and S800 viewing head is capable to detect the flame of almost every available fuel type or fuel mixture and have a high flame discrimination capability because of adjustable background radiation sensitivity.

Industrial process burners, multiple burner systems, incinerators, ovens, kilns, etc.

### Approvals

- FM, CSA approved
- SIL3 capable
- NEMA 4x, IP64

### Protection class

### Ambient temperature

0 ... 50 °C

### Maximum humidity

85 %rh

### Note

- All S70x/80x/700/800 series Flame Safety Products are approved by FM Global for use in SIL 3 environment.
- All S706/S806 UV viewing heads are immune to X-Rays and Gamma radiation, making them ideal for a broad variety of industrial applications.
- Other than any other flame scanner, the S706/S806 UV viewing heads perform background pulse counting for tube health and therefore don't need a mechanical shutter system for self-checking.
- Because Honeywell cable accessories are of USA origin, all cable lengths are measured in Ft (Feet, 1 Ft = 304.8mm)

### Operation

### Cont.

### Additional description

- S702 and S802 models: Germanium photo diode with spectral response 1110 to 1660 nm
- S706 and S806 models: UVton Tube with response 185 to 260 nm
- Fail-safe: no mechanical shutter needed because of the use of electronic monitoring and digital signal processing.
- Technology: Flicker (S702/S802 - IR) and Pulse Count (S706/S806 - UV)
- Works in combination with 700DCSP, 700ACSP and 800SP and on the 3rd channel of the P531 and P532 signal processors.

### Flame scanner heads , with cable connector. Incl. 4.5 m cable and connector.

Product description	Flame detector	Type
Single IR viewing head.	IR	<b>S702</b>
Single UV viewing head.	UV	<b>S706</b>
Single IR viewing head, in stainless steel enclosure.	IR	<b>S802</b>
Single UV viewing head, in stainless steel enclosure	UV	<b>S806</b>

### Flame scanner heads with 15 Ft (3.5 m) factory mounted over-moulded cable

Product description	Flame detector	Type
Single IR viewing head.	IR	<b>S702PF</b>
Single UV viewing head.	UV	<b>S706PF</b>

### Signal Processors for use with S5xx and S55x Viewing Heads. Refer to specific chapter for details.

Single channel signal processing unit for S700/S800 series viewing heads, 85...264 Vac	<b>700ACSP</b>
Single channel signal processing unit for S700/S800 series viewing heads, 24 Vdc	<b>700DCSP</b>
3 channel signal processing unit without display. S700/S800 viewing head connects on 3rd channel only. Voltage: 85...264 Vac	<b>P531AC</b>
3 channel signal processing unit without display. S700/S800 viewing head connects on 3rd channel only. Voltage: 24 Vdc	<b>P531DC</b>
3 channel signal processing unit including display. S700/S800 viewing head connects on 3rd channel only. Voltage: 85...264 Vac	<b>P532AC</b>
3 channel signal processing unit including display. S700/S800 viewing head connects on 3rd channel only. Voltage: 24 Vdc	<b>P532DC</b>

# Industrial Flame Monitoring



700-1

## Parts and accessories: Mounting

Swivel mount for S700/S800. 1" x 1/2" NPT	700-1
Swivel mount for S700/S800. Flanged x 1/2" NPT	700-2
Swivel mount for S700/S800. 1/2" x 1/2" NPT	700-3
S700 cooling jacket for Vortex cooler	700ACC
Liquid tight cable restraint for S700/S800	700CRLT
Delrin adapter replacement for S700. 1/2" NPT model	700DA
Liquid tight cable adapter for S700/S800. 3/8" NPT model	700LTA
Right angle adapter for S700/S800. 1/2" x 1/2" M/F	700RAA
Ultem heat insulating nipple for S700. 1/2" (view) - 1/4" air purge.	700UA
Delrin adapter replacement for S800. 1/2" model.	800DA
Ultem heat insulating nipple for S800. 1/2" (view) - 1/4" air purge.	800UA
1/2 in. NPT Ultem heat insulating nipple for S700/S800 series viewing heads	R-518-13
1/2" NPT locking coupler with high temperature gasket	R-518-CL13-HTG
1/2" NPT Ultem locking coupler adapter only	R-518-PT13
1/2" NPT Ultem locking coupler adapter with quartz lens	R-518-PT13L



700-2



700-3



700CRLT



700DA



700LTA



700RAA



ASY782



700UA



800DA



800UA



ASY784



R-518-13



R-518-CL13-HTG



R-518-PT13

## Parts and accessories: Electrical

Connector cable with LED and 15-ft (4.5 m) cable with braided shield for S700/S800.	ASY782
Viewing head connector kit for S700/S800 without cable.	ASY784
Connector cable with LED and 50-ft (15 m) C330S cable with braided shield for S700/S800.	ASY785
Connector cable with LED and 200-ft (60 m) cable with braided shield for S700/S800.	ASY785-200
4 Conductor cable with braided shield, excl. connector. Orderable in 1 Ft (30.48 cm) incrementals, minimum length is 15 Ft.	C330S

## Parts and accessories: Tools

Ultra violet light source	UVSOURCE
---------------------------	----------



UV-SOURCE

# Industrial Flame Monitoring

1

## Signal processors, single channel

Single channel input for S700/S800 viewing heads. And one model for flame detection with a flame rod.

Temperature range 0 ... 50 °C

Hardware outputs

- Flame relay: 2 x SPDT
- Self-check relay: 1 x SPDT
- 0..20 mA or 4..20 mA (selectable)



600U



### Model for flame detection by flame rod.

Product description	Supply voltage	Type
Flame monitoring system for use with a flame rod.	85..264 Vac	600U

### Standard models, 700xxSP series

Product description	Supply voltage	Type
Adjustable sensitivity signal processor for S700/S800	85..264 Vac	700ACSP
Adjustable sensitivity signal processor for S700/S800	24 Vdc	700DCSP

### Viewing heads S700/S800 with cable & connector

Single IR viewing head.	S702
Single UV viewing head.	S706
Single IR viewing head, stainless steel.	S802
Single UV viewing head, stainless steel.	S806

### Viewing heads S700/S800 with moulded cable

Single IR viewing head ("pig-tail").	S702PF
Single UV viewing head ("pig-tail").	S706PF



700XXSP



S700



S800



S700PF

### Rectifying flame rod for 600U



C7008

Flame rod assembly. Electrode length: 305 mm (12")	C7008A1018/U
Flame rod assembly. Electrode length: 610 mm (24")	C7008A1034/U

## Industrial flame monitoring - Viewing Heads

The S55xBE viewing head delivers flame discrimination in the toughest environments and is capable to detect the flame of almost every available fuel type or fuel mixture. With automatic setup, three channels and the ability to monitor UV and IR flame components simultaneously or separately, the P532 signal processor offers improved burner up time and reliability. Industrial process burners, multiple burner systems, incinerators, ovens, kilns, etc.



S550BE



**Approvals**

- GOST, FM, UL, CSA & NRTL/C Approved
- IECEx certification for specific models (global)
- ATEX certification for S550BE-EX (3rd party product)

**Protection class**

- NEMA 4x, IP64
- S55xBE: Zone 2 Class 1 Div 2 Group A, B, C and D
- S55xBE: IECEx Cat 3 (Zone 2) II 3G IIC T5
- S550BE-EX: ATEX {EX} II 2 G Ex d IIC T6 for use in Zone 1 and 2 (3rd party product)

**Ambient temperature**

-40 ... 70 °C

**Maximum humidity**

85 %rh

**Note**

- All S55xBE / P5xx series Flame Safety Products are approved by FM Global for use in SIL 3 environment.
- All S55xBE viewing heads are immune to X-Rays and Gamma radiation, making them ideal for a broad variety of industrial applications.
- Other than any other flame scanner, the S55xBE viewing heads perform background pulse counting for tube health and therefore don't need a mechanical shutter system for self-checking.
- Because Honeywell cable accessories are of USA origin, all cable lengths are measured in Ft (Feet, 1 Ft = 304.8mm)

**Operation**

Cont.

**Additional description**

- Sensor: UV Tube, Solid State IR sensor or both UV+IR
- Response UV: 210 nm Peak / IR: 1400 nm Peak
- Technology: Pulse Count (UV) and Flicker (IR)
- Self-check: Electronic (no mechanical moving parts)
- Works in combination with P531, P532 and P522 signal processors (P522 with red button labels only).

**Flame scanner heads S55xBE**

Product description	Flame detector	Comment	Type
Dual UV/IR viewing head, with Turck connector (included)	UVTron+IR	Dual LED display for flame signal	<b>S550BE</b>
Single IR viewing head, with Turck connector (included)	IR	Single LED display for flame signal	<b>S552BE</b>
Single UV viewing head, with Turck connector (included)	UVTron	Single LED display for flame signal	<b>S556BE</b>

**Flame scanner heads S55xBE-EX (Explosion proof). 3rd party product.**

Product description	Flame detector	Comment	Type
Dual UV/IR viewing head with explosion proof enclosure. Available via distributor only	UVTron+IR	ATEX (Ex d IIC T6) - Zone 1 & 2	<b>S550BE-EX</b>



S550BE-EX

# Industrial Flame Monitoring

1

## Signal Processors for use with S5xx and S55x Viewing Heads. Refer to specific chapter for details.

2 channel signal processing unit, 85...264Vac	P522AC
2 channel signal processing unit, 24Vdc	P522DC
3 channel signal processing unit without display, 85...264Vac	P531AC
3 channel signal processing unit without display, 24Vdc	P531DC
3 channel signal processing unit including display, 85...264Vac	P532AC
3 channel signal processing unit including display, 24Vdc	P532DC



P522



P531



P532



ACC5XX



ISO-UNIT



ISO-UNITSS

## Parts and accessories: Mounting

Air cooling canister for S550xBE viewing heads. 1/4 inch air inlet port. Use with vortex coolers. Not for older S5xx and S550BE-EX models.	ACC55XBE
Replacement O-ring for ISO-UNIT, ISO-UNITSS and ISO-UNITHPGT	ISO-OR
Replacement quartz window for ISO-Unit and ISO-UnitSS	ISO-QW
Replacement retainer ring for ISO-UNIT, ISO-UNITSS and ISO-UNITHPGT	ISO-RR
1" NPTF sealing union with quartz window and 1/2" NPTF purge port	ISO-UNIT
1" NPTF stainless steel sealing union with quartz window and 1/2" NPTF purge port	ISO-UNITSS
1" NPTF sealing union with quartz window and 1/2" NPTF purge port. High pressure version with 1/2" thick high pressure quartz window	ISO-UNITHPGT
Swivel mount, 2" pipe slip-on to 1" NPT connection	M-701-1
Swivel mount for S55xBE series viewing heads. 2" NPT female to 1" NPT female	M-701-2
Flanged swivel mount, 2" flanged to 1" NPTF	M-701-2-FLG
Swivel mount, 2" NPT female to 1" NPT female. Stainless steel construction	M-701-2-SS
Flanged swivel mount, 3-bolt, 4.5" flanged to 1" NPTF	M-701-3
Swivel mount, 3" NPTF to 1" NPTF connection	M-701-3P
Swivel mount, 2-bolt to 1" NPTF connection	M-701-4
Swivel mount bushing 1" x 1/2" NPT, 1/2" connection	M-701-5
Orifice and retaining ring set. Used for all viewing heads	M-702-6
High temperature gasket for 1" locking coupler	PT-GA1
Quartz lens for 1" locking coupler	PT-QL1
1" NPT Ultem heat and electrical insulating nipple for S55xB/BE series viewing heads swivel mount.	R-518-12
1" NPT locking coupler with high temperature gasket	R-518-CL12-HTG
1" NPT aluminum locking quick disconnect/cam and groove coupler adapter with 1/2" NPT purge port. Used with U2 processor/viewing heads	R-518-CL12-PG
1" NPT Ultem insulating locking coupler adapter. Used with U2 processor/viewing head	R-518-PT12
1" NPT Ultem locking coupler adapter with quartz lens	R-518-PT12L



M-701-2



M-701-2-FLG



M-701-2-SS



M-701-3



M-701-3P



M-701-4



M-702-6



R-518-12



R-518-CL13-HTG



R-518-CL12-PG



R-518-PT12



R-518-PT12L

### Parts and accessories: Electrical



ASYS55XBE



C330S



LTA

C330S cable with connector for S55xBE series viewing heads, length 50 Ft / 15 m	ASYS55XBE
C330S cable with connector for S55xBE series viewing heads, length 200 Ft / 60 m	ASYS55XBE-200
4 Conductor cable with braided shield, excl. connector. Orderable in 1 Ft (30.48 cm) incrementals, minimum length is 15 Ft.	C330S
Liquid tight viewing head cable adapter for old type S5XX series viewing heads only. 1/2" NPTF conduit connection	LTA5XX
Liquid tight viewing head cable adapter for S55xBE series viewing heads. 1/2" NPTF conduit connection	LTA55XBE
Quick disconnect connector only for all S55xBE viewing head models	R-518-09

### Parts and accessories: Tools

Configuration colour touch screen display, with preinstalled Windows CE based configuration software and Modbus connection to connect 700xCSP, P222, P5xx and U2-S signal processors	FLAMETOOLS-HMI/U
C ISO-Union wrench set	ISO-WRENCH
Ultra violet light source	UVSOURCE



FLAMETOOLS-HMI



UVSOURCE

# Industrial Flame Monitoring

1

## Signal processors, independent dual channel, P531, P532



P531

Independent dual channel input for viewing heads: S55xBx (channel 1 and 2) or S700/S800 (channel 3). Battery backup 24V DC

Temperature range	-40 ... 60 °C
R.H. range	50 ... 80 %rh
Bus system description	<ul style="list-style-type: none"> <li>• Modbus</li> <li>• RS422 (differential)</li> </ul>
Hardware outputs	<ul style="list-style-type: none"> <li>• Flame relay: 3 x DPDT</li> <li>• Self-check relay: 1 x SPDT</li> <li>• Alarm relay: 1 x SPST</li> <li>• 0..20 mA or 4..20 mA (selectable)</li> </ul>



### With LED-indication

Power supply	Type
24 V DC	P531DC
85..264 24 V AC	P531AC

### With user interface integrated

Power supply	Type
24 V DC	P532DC
85..264 24 V AC	P532AC

### Programming and configuration tools

Configuration colour touch screen display, with preinstalled Windows CE based configuration software and Modbus connection to connect 700xCSP, P222, P5xx and U2-S signal processors

FLAMETOOLS-HMI/U

C



P532



FLAMETOOLS-HMI



S550BE

### Viewing heads S55xBx (Channels 1 & 2)

Dual UV/IR viewing head, with Turck connector (included)	S550BE
Single IR viewing head, with Turck connector (included)	S552BE
Single UV viewing head, with Turck connector (included)	S556BE

### Viewing head S550BE-EX (Channels 1 & 2)

Dual UV/IR viewing head, in explosion proof enclosure (ATEX). Note: 3rd party product.	S550BE-EX
--	-----------



S550BE-EX

### Viewing heads S700 and S800 (Channel 3 only)

IR viewing head (aluminium enclosure)	S702
UV viewing head (aluminium enclosure)	S706
IR viewing head (stainless steel enclosure)	S802
UV viewing head (stainless steel enclosure)	S806



S700



S800



# Industrial Flame Monitoring

## Signal processors, selectable dual channel, P522



P522

Selectable dual channel input for viewing heads: S5xx or S55xBx.  
Battery backup 24V DC

- Temperature range 0 ... 50 °C
- R.H. range 50 ... 80 %rh
- Bus system description RS422 (differential)
- Hardware outputs
  - Flame relay: 2 x SPDT
  - Self-check relay: 1 x SPST
  - Alarm relay: 1 x SPST
  - 0..20 mA or 4..20 mA (selectable)



### With LED-indication

Power supply	Type
24 V DC	P522DC
85..264 24 V AC	P522AC

### Viewing heads S55xBx

Dual UV/IR viewing head, with Turck connector (included)	S550BE
Single IR viewing head, with Turck connector (included)	S552BE
Single UV viewing head, with Turck connector (included)	S556BE
Dual UV/IR viewing head in ATEX Ex d IIC T6 housing	S550BE-EX

### Configuration / programming tools

Configuration colour touch screen display, with preinstalled Windows CE based configuration software and Modbus connection to connect 700xCSP, P222, P5xx and U2-S signal processors

FLAMETOOLS-HMI/U

C



S550BE



S550BE-EX



FLAMETOOLS-HMI

## Fibre optics extensions for viewing heads



FASA

The Honeywell FASA-GLASS and FASA-QUARTZ fibre optic extensions are complete engineered assembled and tested accessories for viewing heads and make it possible to monitor flame in a hostile environment, in the presence of:

- excessive vibration
- intense heat
- corrosive chemicals
- explosive gases or dust
- complex burner configuration
- A fibre optic bundle is used to transmit flame radiation to the remotely located flame detector/viewing head. Flexible stainless steel tubes enclose the fibre optic bundle with forced air injection for cooling.
- A lens is used to focus the flame to one end of the fibre optic bundle, with the other end coupled directly to the viewing head.
- Various lengths are available in 1 Ft (30.4 cm) incrementals to a maximum of a little less than 8 m (25 Ft)

For IR only detection systems the **glass** fibre extensions are used

For UV only and dual UV/IR detection systems the **quartz** fibre extensions are used

Temperature range                      -40 ... 400 °C

Note    FASA fibre optics assemblies are configured products. That means that the full length and used viewing head needs to be specified when ordering. The configuration cannot be changed once the FASA fibre optics assembly has been produced in the factory. **Contact Honeywell before ordering.**

### Infrared: complete glass fibre optics assembly.

Model	Product description	Type
IR	Glass fibre optics complete assembly for IR with guide pipes and flexible connection.	<b>FASA-GLASS</b>

### Infrared: inner assembly glass fibre optics. Excluding outer tubing.

Model	Product description	Type
IR	Glass fibre optics inner assembly for IR with flexible connection.	<b>FASA-INT-GLASS</b>

### Ultraviolet: complete quartz fibre optics assembly.

Model	Product description	Type
UV/IR	Quartz fibre optics complete assembly for UV and/or IR with guide pipes and flexible connection.	<b>FASA-QUARTZ</b>

### Ultraviolet: inner assembly quartz fibre optics. Excluding outer tubing.

Model	Product description	Type
UV/IR	Quartz fibre optics complete assembly for UV and/or IR with flexible connection.	<b>FASA-INT-QUARTZ</b>

## Heavy duty gas pilot ignitors



GHE

The GHE igniters are non-fouling, inextinguishable, high-energy electric igniters suitable for most liquid and gaseous fuels. They are available for both 47 mm (1-7/8") and 73 mm (2-7/8") diameter support tubes, in lengths to suit the application.

The unique high energy circuit makes use of a controlled capacitor discharge to produce a high energy spark at a pulse rate of approximately 3 to 5 times per second that ignites liquid or gaseous fuels more reliably and consistently.

The GHE igniter assembly is comprised of two major parts; a high energy source of ignition and an internal mix air-gas delivery system.

The GHE Igniters are supplied with:

- 0.9 m (36") stainless steel flexible gas hose
- 0.9 m (36") stainless steel flexible air hose
- burner mounting tube
- high energy probe
- igniter tip 305 mm (12") long x 12.7 mm (1/2") outer diameter
- Various lengths are available in 1 Ft (30.4 cm) incremental to a maximum of 25 Ft (ca. 8 m)

**Note**

GHE pilot burner assemblies are configured products. That means that the full length needs to be specified when ordering. The configuration cannot be changed once the GHE pilot burner assembly has been produced in the factory. **Contact Honeywell before ordering.**

Product description	Type
Gas pilot ignitor assembly (300 - 900 kW)	GHE1-3
Gas pilot ignitor assembly (600 - 1500 kW)	GHE2-5

**Accessories**

12 Joule Power Pack, 120/230Vac, 50/60Hz	POWERPACK-12-CS
NEMA 4X enclosure for igniter powerpack.	NEMA-4X-ADD

**Replacement parts**

Replacement igniter probe junction box with canon plug receptacle for GHE igniters.	IGN-CPC-LB
Replacement internal GHE igniter cable with contact, specify length before ordering.	HV-HT

# Industrial Flame Monitoring

1

## Flare monitoring system



WATCHDOGIIIIBE



P222



S256BE



FLAMETOOLS-HMI

Watchdog III is a flare stack monitoring system, guarding against the venting of hazardous gases in the atmosphere.

Can be used for continuous onsite flare monitoring

- The fail-safe and well proven UVtron technology is used for flame detection.

Totally immune to sunlight:

- Can be installed anywhere in a 360 degree radius around the flare stack. Operates in the 210 nm range of the spectrum (UV)

The viewing head can be mounted outside a explosion hazardous location:

- The WATCHDOG viewing head can detect a flare more than 300 m away.

The signal processing unit can be mounted inside a nearby wiring cabinet.

Temperature range -40 ... 80 °C

Bus system description Serial communication: RS422/485 (differential)  
 • 4800, 9600, 19200 or 38400 baud (selectable)

Hardware outputs  
 • Early indication: 2 x SPDT  
 • Delayed indication: 1 x SPDT  
 • 0..20 mA or 4..20 mA (selectable)

Note  
 • Because Honeywell cable accessories are of USA origin, all cable lengths are measured in Ft (Feet, 1 Ft = 304.8mm)

### Complete set

Product description	Supply voltage	Type
Complete set, consists of P222, S256BE and ASYS5XXBE	85..264 Vac	WATCHDOGIIIIBE

### Individual components (excl. connector and cable)

Product description	Supply voltage	Type
Watchdog Signal Processor only with mounting base and terminal. Excl. connector.	85..264 Vac	P222
Watchdog III UV Digital flare stack pilot monitor viewing head. Powered by P222.	24 Vdc	S256BE

### Configuration tools

Configuration colour touch screen display, with preinstalled Windows CE based configuration software and Modbus connection to connect 700xCSP, P222, P5xx and U2-S signal processors	FLAMETOOLS-HMI/U
Configuration software on USB key drive, incl. RS422/85 to USB converter module	FLAMETOOLS-PC

### Cables

4 Conductor cable with braided shield, excl. connector. Orderable in 1 Ft (30.48 cm) incrementals, minimum length is 15 Ft. **C330S**

C330S cable with connector for S55xBE series and S256BE viewing heads, length 50 Ft / 15 m. **ASYS55XBE**

### Accessories

Turck plug for S256BE viewing head, used with C330S cable. **R-518-10**



C330S



ASYS55XBE











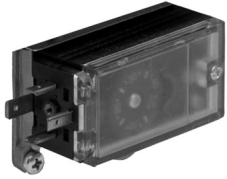




# Gas and Air Pressure Switches

1

## Pressure switch for gas application C60VR



C60VR40



Pressure switch for gas application to be mounted on VQ400 dual valves and VRB00/VR400/V4730 combination gas valves.

- The C60VR40xxx has an adjustable setpoint and performs minimum gas pressure supervision in a safe start interlock circuit.
- The C60VR40xxx is designed to be fitted directly on the valve body of the applicable gas valve body, using two mounting screws and an O-ring.

Kind of pressure	overpressure, relative
Pressure connection	Flanged, directly on valve body.
Electrical connection	DIN plug
Protection class	IP00 (IP54 with DIN plug mounted)
Housing material	<ul style="list-style-type: none"> <li>• Body: aluminium</li> <li>• Cover: reinforced PBT glassfibre</li> </ul>
Ambient temperature	-10 ... 70 °C
End switch function/ capacity	<ul style="list-style-type: none"> <li>• Switch action: 1x SPDT</li> <li>• Resistive: 5A</li> <li>• Inductive (COS PHI = 0.6): 0.5A</li> </ul>
Approvals	<ul style="list-style-type: none"> <li>• C60VR40 models: CE (EN 1854)</li> <li>• C60VRT40 models: UL</li> </ul>
Mounting position	horizontal
Comment	Max. pressure: 2 bar < 15 min
Additional description	DIN plug not included.

### Models for Europe

Pressure adjustment range mbar	Differential pressure mbar	Max. pressure mbar	Type
5 ... 40	1.5 ... 2.5	100	<b>C60VR40040</b>
30 ... 110	4 ... 12	600	<b>C60VR40110</b>

### Models for USA

Pressure adjustment range mbar	Differential pressure mbar	Max. pressure mbar	Type
5 ... 40	1.5 ... 2.5	600	<b>C60VRT40040</b>



CO020012

### Parts

DIN Plug	CO020012
----------	----------

# Gas and Air Pressure Switches

## Pressuretrol Controllers



L404F



Provide operating control with automatic limit protection for pressure systems up to 20 Bar (300 psi).

Kind of pressure	overpressure, relative
Electrical connection	conduit
Housing material	Painted carbon steel and transparent plastic front cover
Media temp.	-37 ... 66 °C
Ambient temperature	-37 ... 66 °C
Switch function/capacity	SPDT Microswitch 250Vac; capacity: 1 A (inductive); 5 A resistive
Mounting position	vertical
Additional description	<ul style="list-style-type: none"> <li>• Use with steam, air, noncombustible gases, or fluids non-corrosive to pressure sensing element</li> <li>• Models have snap-acting switching to open or close a circuit on pressure rise</li> <li>• Adjustable differentials</li> <li>• Mount using 1/4" NPT internal pipe thread or surface mount through base of case</li> <li>• Stainless steel diaphragm</li> </ul>

### European model, incl. grounding screw

Pressure adjustment range kPa	Differential pressure adjustment range kPa	Max. pressure kPa	Pressure connection	Protection class	Type
14 ... 103	14 ... 41	345	1/4" BSP	IP40	L404F1219/U
69 ... 1034	60 ... 152	1551	1/4" BSP	IP40	L404F1227/U
138 ... 2068	138 ... 345	2413	1/4" BSP	IP40	L404F1235/U
35 ... 345	41 ... 97	586	1/4" BSP	IP40	L404F1243/U

### American model

Pressure adjustment range kPa	Differential pressure adjustment range kPa	Max. pressure kPa	Pressure connection	Protection class	Type
14 ... 103	14 ... 41	345	1/4" NPT	NEMA1	L404F1060/U
35 ... 345	41 ... 97	586	1/4" NPT	NEMA1	L404F1078/U
138 ... 2068	138 ... 345	2413	1/4" NPT	NEMA1	L404F1094/U
69 ... 1034	60 ... 152	1551	1/4" NPT	NEMA1	L404F1102/U

### American model, Limit Controller. With manual reset.

Has 2X SPST switches which open simultaneously on pressure rise.

Pressure adjustment range kPa	Differential pressure adjustment range kPa	Max. pressure kPa	Pressure connection	Protection class	Type
69 ... 1034	-	1551	1/4" NPT	NEMA1	L4079A1050/U

Steam Trap Black Iron Siphon Loop for L404 or L91

14026/U

# Gas and Air Pressure Switches

1

## Proportional Pressure Control Controllers



L91B1043

Modulating pressure operating control for regulation of liquid or air and other non-corrosive gases.

Kind of pressure	overpressure, relative
Pressure connection	1/4" NPT external thread
Electrical connection	conduit
Protection class	IP44
Housing material	Painted carbon steel and transparent plastic front cover
Media temp.	0 ... 66 °C
Ambient temperature	0 ... 66 °C
Switch function/capacity	Modulating: 140 Ohm potentiometer
Mounting position	vertical
Additional description	<p>Brass bellows</p> <ul style="list-style-type: none"> <li>• Use with steam, air, noncombustible gases, or other fluids noncorrosive to the brass or phos-bronze (20 Bar / 300 psi models) bellows</li> <li>• Do NOT use with combustible mediums or any medium chemically harmful to phos-bronze bellows (0.6-20 Bar / 10-300 psi models) or brass bellows (all other pressure range models)</li> <li>• Do NOT use with combustible mediums or any medium chemically harmful to phos-bronze bellows (0.6-20 Bar / 10-300 psi models) or brass bellows (all other pressure range models)</li> </ul>

### Single potentiometer 140 Ohms. With optional surface mount through back of case.

Pressure adjustment range kPa	Differential pressure adjustment range kPa	Max. pressure kPa	Type
0 ... 103	10 ... 83	172	L91B1035/U
34 ... 1034	35 ... 160	1551	L91B1050/U
69 ... 2068	193 ... 758	2241	L91B1068/U
0 ... 2068	85 ... 330	2241	L91B1241/U

### Single potentiometer 140 Ohms. With G1/4" mounting.

Pressure adjustment range kPa	Differential pressure adjustment range kPa	Max. pressure kPa	Type
0 ... 1034	35 ... 160	1551	L91B1100/U
0 ... 2068	193 ... 758	2241	L91B1118/U

Steam Trap Black Iron Siphon Loop for L404 or L91	14026/U
---	---------



# Servo Motors

1

## Modutrol IV servo motors



MODUTROL-4



Modutrol IV Motors are spring return and non-spring return motors used to control dampers and valves.

- M62xx models are three-wire floating control motors for use with controllers that provide a switched spdt or floating output and have an internal electrically isolated feedback potentiometer that provides indication of the motor shaft position.
- M72xx models accept a current or voltage signal from an electronic controller to position the motor shaft to any point between open and closed.
- M91xx and M94xx models use a 135Ohm modulating proportional signal to position the motor shaft to any point between open and closed.

Modutrol IV motors are used for damper and valve control in industrial burner applications and air handling installations.

Approvals

- CE, UL, FM, CSA, EAC

Protection class

IP44

- Weather protection kit is available as accessory to upgrade to IP54

Ambient temperature

-40 ... 66 °C

Maximum humidity

85 %rh

Features

- Screw terminals are standard.
- Adapter bracket for matching shaft height of older motors (ModIII) is available.
- Most models have field adjustable stroke (90 to 160).
- Die-cast aluminium housing.
- Two adjustable internal SPDT auxiliary switches are factory mounted.
- Dual shaft ends for normally open or normally closed valve or damper application. Both shaft ends offer the same torque rating.



MXXX4

Input voltage

- Default: 24 Vac
- Via optional built-in transformer: 24/120/230 Vac
- Line frequency: 50/60 Hz



MXXX5

Shaft mounting

9.5mm (3/8") square for all models on both ends

End switches

2

Function

Normally Closed

Additional description

- Modutrol motor timings are independant of line frequency.
- Torque ratings for dual-ended shaft motors are the sum of the shaft torques (power-end torque plus auxiliary-end torque).
- Breakaway torque is the maximum torque available to overcome occasional large loads such as a seized damper or valve. The breakaway torque is 1.5x the normal rated torque.
- Other models than listed in this catalogue are available outside Europe. Most models can be replaced by the available European models.

# Servo Motors

## Modutrol IV family

Supply voltage	Power consumption W	Input signal	Angle of rotation °	Runtime s	Torque Nm	Position feedback	Model	Type
24/120/230 Vac	See table	See table	See table	See table	See table	–	Series 2/3	<u>M62xx-M72xx-M9xx</u>

### 3-point control non-spring return (M62x4) (Angle of rotation: Adj. 90° .. 160°; Note: Linear feedback)

Supply voltage	Power consumption W	Input signal	Comment	Runtime s	Torque Nm	Position feedback	Model	Type
24 Vac	14	SPDT	Factory set at 90	Var. 15 .. 27	8.5	10kohm	Series 2	<b>M6274F1009-F/U</b>
24 Vac	13	SPDT	Factory set at 90	Var. 30 .. 53	17	10kohm	Series 2	<b>M6284F1078-F/U</b>
24 Vac	11	SPDT	Factory set at 160	Var. 120..214	34	10kohm	Series 2	<b>M6294F1009-F/U</b>
24 Vac	14	SPDT	Factory set at 90	Var. 60 .. 107	34	10kohm	Series 2	<b>M6294F1017-F/U</b>

### 3-point control spring return (M62x5) (Angle of rotation: Adj. 90° .. 160°; Note: Linear feedback)

Supply voltage	Power consumption W	Input signal	Comment	Runtime s	Torque Nm	Position feedback	Model	Type
24 Vac	23	SPDT	Factory set at 160	Var. 30 .. 53	6.8	10kohm	Series 2	<b>M6285F1001-F/U</b>

### Analogue input control non-spring return (M72x4) (Angle of rotation: Adj. 90° .. 160°)

Supply voltage	Power consumption W	Input signal	Comment	Runtime s	Torque Nm	Position feedback	Model	Type
24 Vac	14	4-20 mA	Factory set at 90	Var. 15 .. 27	8.5	–	Series 2	<b>M7274Q1009/U</b>
24/120/230 Vac	13	4-20 mA		Fixed 30	17	–	Series 2	<b>M7284Q1082/U</b>
24 Vac	13	2-10 Vdc	Factory set at 160	Var. 30 .. 53	17	–	Series 2	<b>M7284Q1098/U</b>
24 Vac	13	4-20 mA	Factory set at 90	Var. 30 .. 53	17	–	Series 2	<b>M7284Q1106/U</b>
24 Vac	14	4-20 mA	Factory set at 90	Var. 60 .. 107	34	–	Series 2	<b>M7294Q1015/U</b>

### Analogue input control spring return (M72x5) (Angle of rotation: Adj. 90° .. 160°)

Supply voltage	Power consumption W	Input signal	Comment	Runtime s	Torque Nm	Position feedback	Model	Type
24 Vac	23	4-20 mA	Factory set at 90	Var. 30 .. 53	6.8	–	Series 2	<b>M7285Q1024/U</b>
24 Vac	23	2-10 Vdc	Factory set at 160	Var. 30 .. 53	6.8	–	Series 2	<b>M7285Q1032/U</b>

### Potentiometer control non-spring return (M9xx4) (Angle of rotation: Adj. 90° .. 160°)

Supply voltage	Power consumption W	Input signal	Comment	Runtime s	Torque Nm	Position feedback	Model	Type
24 Vac	12	0-150 Ohm	Factory set at 160	Var. 30 .. 53	8.5	–	Series 3	<b>M9174F1001/U</b>
24 Vac	14	0-150 Ohm	Factory set at 90	Var. 30 .. 53	17	–	Series 3	<b>M9184F1034/U</b>
24 Vac	14	0-1500 hm	Factory set at 90	Var. 15 .. 27	8.5	–	Series 3	<b>M9484F1023/U</b>
24 Vac	14	0-150 Ohm	Factory set at 160	Var. 30 .. 53	17	–	Series 3	<b>M9484F1057/U</b>
24 Vac	15	0-150 Ohm	Factory set at 90	Var. 60 .. 107	34	–	Series 3	<b>M9494F1003/U</b>

### Potentiometer control spring return (M9xx5) (Angle of rotation: Adj. 90° .. 160°)

Supply voltage	Power consumption W	Input signal	Comment	Runtime s	Torque Nm	Position feedback	Model	Type
24 Vac	24	0-150 Ohm	Factory set at 160	Var. 30 .. 53	6.8	–	Series 3	<b>M9185F1002/U</b>

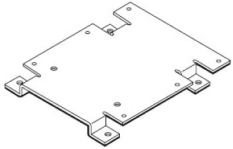


# Servo Motors

1



A220736B



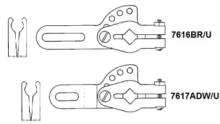
A220738A



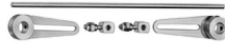
50017460-001

## Accessories

Replacement dual internal auxiliary switch kit	220736B/U
Adapter bracket to adjust shaft height when replacing old ModII or ModIII motors.	220738A/U
Adjustable cranc arm kit	221455A/U
Weatherproofing kit. Protects motor from driving rain when mounted in any position	4074ERU/U
Internal multi tap transformer for use on 120 or 230Vac voltage or to provide galvanic insulation. 24/120/230V to 24V.	50017460-001/U
Cranc arm assembly short	7617ADW/U
Cranc arm assembly long	7616BR/U
Single auxiliary 135Ohm potentiometer. Can be used as feedback potentiometer or to control slave M9xxx motors.	Q181A1007/U
Damper linkage. Includes pushrod, 2 damper arms and 2 ball joints	Q298B1065/U
Damper linkage. Includes mounting bracket, damper arm, motor crankarm, and 2 ball joints	Q605A1070/U
Adapter to convert M9xxx motors to analogue input version. Note: control accuracy <5%. For improved control accuracy, use M7xxx motor.	Q7230A1005/U



7616BR-7617ADW



Q298B1065



Q7230A1005-2



Q181A1007



Q605A1070





# Unit Conversion Table

3



# Unit conversion table (metric)

## Length

	inch (m)	foot (ft)	mile	meter (m)
1 inch =	1	0,0833	-	0,0254
1 foot =	12	1	-	0,3048
1 mile =	-	-	1	1609,3
1 meter =	39,37	3,2808	621,4 x 10 <sup>-6</sup>	1

## Volume

	cubic foot (cu.ft.)	Eng. gallon (UK gal)	Am. gallon (US gal)	dm <sup>3</sup>
1 cubic foot =	1	-	-	28,32
1 Eng. gal =	-	1	-	4,546
1 Am. gal =	-	-	1	3,785
1 dm <sup>3</sup> =	0,03531	0,21998	0,26420	1

## Weight

	ounce (oz)	pound (lb)	gram (g)	kilogram (kg)
1 ounce =	1	0,0625	28,35	0,02835
1 pound =	16	1	453,6	0,4536
1 gram =	0,0353	2,2046 x 10 <sup>-3</sup>	1	0,001
1 kilogram =	35,3	2,2046	1000	1

## Pressure

	bar <sup>1)</sup>	standard atmosphere atm <sup>2)</sup>	kgf/cm <sup>2</sup> <sup>3)</sup>	lbf/in <sup>2</sup> <sup>4)</sup> PSI <sup>10)</sup>	kPa
1 bar <sup>1)</sup> =	1	0,987	1,020	14,50	100
1 atm <sup>2)</sup> =	1,013	1	1,033	14,70	101,3
1 kgf/cm <sup>2</sup> <sup>3)</sup> =	0,981	0,968	1	14,22	98,1
1 lbf/in <sup>2</sup> <sup>4)</sup> / PSI <sup>10)</sup> =	0,0689	0,680	0,0703	1	6,89
1 kilopascal (kPa) =	0,01	0,00987	0,0102	0,145	1

## Pressure (continued)

	millibar	mm water column (mm H <sub>2</sub> O)	mm mercury (mm Hg)	inch water column (in H <sub>2</sub> O)	kPa	Pa
1 mbar =	1	10,20	0,750	0,4015	0,1	100
1 mm H <sub>2</sub> O =	0,0981	1	0,0736	0,03937	0,00981	9,81
1 mm Hg =	1,333	13,60	1	0,535	0,1333	133,3
1 in H <sub>2</sub> O =	2,491	25,40	1,868	1	0,2491	249,1
1 kilopascal (kPa) =	10	102	7,5	4,015	1	1000
1 Pa =	0,01	0,1	0,0075	0,004	0,001	1

<sup>1)</sup> 1 bar = 10<sup>5</sup> N/m<sup>2</sup>, 1 millibar = 10<sup>2</sup> N/m<sup>2</sup>

<sup>2)</sup> same as 760 mm Hg (mercury) at sea level

<sup>3)</sup> formerly: kg/cm<sup>2</sup>, same as 1 at, or 1 ato over pressure

<sup>4)</sup> formerly: 1 lb/sq.in or as psi

<sup>5)</sup> 1 thermic to be considered the same as 1 Mcal

## Flow

	ft <sup>3</sup> /h	dm <sup>3</sup> /s	m <sup>3</sup> /min	m <sup>3</sup> /h	cfm
1 ft <sup>3</sup> /h =	1	0,00787	0,000472	0,02832	0,0167
1 dm <sup>3</sup> /s =	127,1	1	0,06	3,6	2,12
1 m <sup>3</sup> /min =	2119	16,67	1	60	35,71
1 m <sup>3</sup> /h =	35,31	0,2778	0,01667	1	0,589
1 cfm =	60	0,47	0,028	1,699	1

## Force

	lbf	kgf	N
1 pound-force (lbf) =	1	0,454	4,448
1 kilogram force (kgf) =	2,205	1	9,81
1 newton (N) =	0,225	0,102	1

## Torque

	Nm	mkgf	lbf.in
1 Nm =	1	0,102	8,858
1 mkgf =	9,81	1	86,72
1 lbf.in =	0,113	0,012	1

## Power

	Mega-calorie per hour (Mcal/h)	horse-power (hp)	British thermal unit p/h (Btu/h)	kilowatt (kW = kJ/s)
1 Mcal/h =	1	1,583	3968	1,163
1 hp =	0,632	1	2510	0,735
1 Btu/h =	252 x 10 <sup>-6</sup>	398,5 x 10 <sup>-6</sup>	1	293 x 10 <sup>-6</sup>
1 kW =	0,860	1,360	3412	1

## Energy

	Mega-calorie (Mcal) <sup>5)</sup>	therm <sup>6)</sup>	kilowatt-uur (kWh)	Mega-joule (MJ)
1 Mcal <sup>5)</sup> =	1	0,03968	1,163	4,186
1 therm <sup>6)</sup> =	25,2	1	29,31	105,5
1 kWh =	0,860	0,03412	1	3,6
1 MJ =	0,2389	0,00948	0,2778	1

## Calorific value (and Wobbe index)

	Mega-calorie per standard m <sup>3</sup> (Mcal/m <sup>3</sup> ) <sup>7)</sup>	kilo-calorie per standard m <sup>3</sup> (kcal/Nm <sup>3</sup> ) <sup>8)</sup>	British thermal unit per cu.ft. (Btu/ft <sup>3</sup> ) <sup>9)</sup>	Mega-joule per standard m <sup>3</sup> (MJ/m <sup>3</sup> ) <sup>7)</sup>
1 Mcal/m <sup>3</sup> <sup>7)</sup> =	1	1055	110,5	4,186
1 kcal/Nm <sup>3</sup> <sup>8)</sup> =	948 x 10 <sup>-6</sup>	1	0,1047	3968 x 10 <sup>-6</sup>
1 Btu/ft <sup>3</sup> <sup>9)</sup> =	0,00905	9,55	1	0,03788
1 MJ/m <sup>3</sup> <sup>7)</sup> =	0,2389	252,0	26,4	1

<sup>5)</sup> 1 therm = 100.000 Btu (British thermal unit)

<sup>7)</sup> m<sup>3</sup>s = 1 m<sup>3</sup> (15 °C, 1013 mbar, dry)

<sup>8)</sup> 1 Nm = 1 m<sup>3</sup> (0 °C, 760 mm Hg, dry)

<sup>9)</sup> 1 ft<sup>3</sup> = 1 ft<sup>3</sup> (60 °F, 30 in Hg, wet)

<sup>10)</sup> PSI = pound/inch<sup>2</sup>

**Honeywell Thermal Solutions**

Maxon International BVBA  
Luchthavenlaan 16  
1800 Vilvoorde  
Belgium  
T +32 2 255 0909  
F +32 2 251 8241  
hic.emea@honeywell.com  
ThermalSolutions.honeywell.com

Copyright © 2017 Honeywell International Inc  
All rights reserved.

